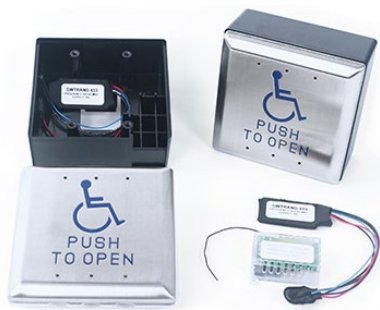


WIRELESS PUSH PLATE KITS



Designed to control automatic door or electrified locking hardware with wireless push plate actuators. Each kit contains 4½" push plates (round or square), two matching surface mount back boxes (round or square), wireless transmitters (400W1-433, 9V) and a wireless nano receiver (400RC433).

Designed specifically for handicap access, automatic door activation and request-to-exit applications. Pressing any part of plate causes switch activation.



482S-KIT



482R-KIT



482S-CBCKIT

KIT COMPONENTS

482S-KIT

- (2) 482A4U plates
- (2) 480-SSB mounting boxes
- (2) 400W1-433 transmitters
- (1) 400RC433 receiver

482R-KIT

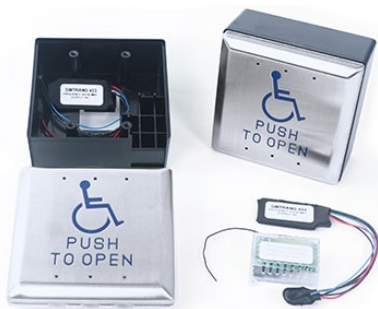
- (2) 482A4RU plates
- (2) 480-4RSB surface boxes
- (2) 400W1-433 transmitters
- (1) 400RC433 receiver

482S-CBCKIT

- (4) 482A4U plates
- (4) 480-SSB surface boxes
- (4) 400W1-433 transmitters
- (1) 400RC433 receiver

KIT SPECIFICATIONS

	482S-KIT	482R-KIT	482S-CBCKIT
Plates	482A4U	482A4RU	482A4U
Plate Size	Double Gang, Square	Double Gang, Round	Double Gang, Square
Dimensions	4½" x 4½"	4½"	4½" x 4½"
Contact	SPDT	SPDT	SPDT
Rating	2 Amp @ 48 VDC Resistive	2 Amp @ 48 VDC Resistive	2 Amp @ 48 VDC Resistive
Type	Momentary (MO)	Momentary (MO)	Momentary (MO)
Depth	7⁄8"	7⁄8"	7⁄8"
Mounting Boxes	480-SSB	480-4RSB	480-SSB
Dimensions	4½" x 4½" x 1¾"	5" x 2½"	4½" x 4½" x 1¾"
Transmitters	400W1-433	400W1-433	400W1-433
Dimensions	1⁹⁄₁₆" x 1⁵⁄₁₆" x 7⁄₃₂"	1⁹⁄₁₆" x 1⁵⁄₁₆" x 7⁄₃₂"	1⁹⁄₁₆" x 1⁵⁄₁₆" x 7⁄₃₂"
Input	9V Battery (included)	9V Battery (included)	9V Battery (included)
Contact	SPST-NO	SPST-NO	SPST-NO
Type	Momentary (MO)	Momentary (MO)	Momentary (MO)
Operating Environment	-20°F to +100°F	-20°F to +100°F	-20°F to +100°F
Receivers	400RC433	400RC433	400RC433
Dimensions	1¼" x 2" x ¾"	1¼" x 2" x ¾"	1¼" x 2" x ¾"
Input	12/24 VAC/DC	12/24 VAC/DC	12/24 VAC/DC
Contact	SPST-N/O	SPST-N/O	SPST-N/O
Type	Momentary (MO)	Momentary (MO)	Momentary (MO)
Operating Environment	-4°F to +158°F	-4°F to +158°F	-4°F to +158°F



482S-KIT



482R-KIT



482S-CBCKIT

www.sdcsec.com/480

