

EP17624 Series

Explosion Proof Electromagnetic Locks



SDC's EP17624 series explosion proof electromagnetic locks are specifically designed for applications where flammable vapors are cause for concern: clean rooms, chemical plants, or refinery environments by eliminating the sparks or arc in the magnetic lock.

UL listed for use in hazardous locations class 1, division 2.

This unit is intended to be used in the following atmospheres: acetone, ammonium hydroxide, ATSM fuel C, benzene, methyl-ethylketone, diethyl-ether, 2-nitropropane, ethyl-acetate, furfural, normal hexane, methyl alcohol.

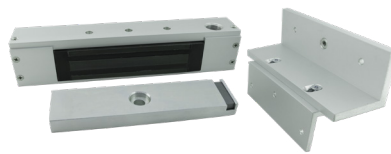
Operating temperature for the magnetic lock will not exceed 185° F (85° C). Maximum ambient temperature is not to exceed 104° F (40° C). For supply connections, use a suitable wire with a minimum insulation temperature rating of 167° F (75° C).

This unit must be connected to a NEC (National Electric Code), NFPA 70) class 2 supply circuit rated for 24 VDC with a minimum current output of 500 mA and output power of 12 watts. UL listed SDC 600 series power controller is recommended.

EP17624TJ models include a Z bracket for top jamb, pull-side applications.



EP17624



EP17624TJ

MODELS

EP17624 Single Explosion Proof Magnetic Lock, Side Conduit, 600lbs

EP17624TJ Single Explosion Proof Magnetic Lock, Top Conduit, 600lbs

STANDARD FEATURES

- Hazardous location design
- Explosion proof epoxy sealed
- Corrosion resistant
- Conduit chamber with terminal block
- Interlocking quick mount assembly
- Voltage and current spike protection
- Door position status (DPS)



SPECIFICATIONS

	EP17624	EP17624TJ
Housing	Aluminum	Aluminum
Finish	628 Dull Aluminum	628 Dull Aluminum
Conduit Location	Side	Top
Mounting	Push-Side	Pull-Side, Top Jamb Z Bracket Included
Holding Force	600 lbs	600 lbs
Dimensions	10½" x 2" x 1¾" Housing 7⅞" x 1¾" x ¾" Armature	10½" x 2¼" x 1¾" Housing 7⅞" x 1¾" x ¾" Armature
Weight	7 lbs	10 lbs
Input	24 VDC ± 10%	24 VDC ± 10%
Current Draw	250 mA	250 mA
Door Position Status (DPS)	SPDT 100 mA @ 30 VDC Resistive	SPDT 100 mA @ 30 VDC Resistive

CERTIFICATIONS

UL 228 Door Closers-Holders, With or Without Integral Smoke Detectors

UL Classified for Hazardous Locations Class 1, Division 2

Model: 176HD (File E146590)

HOW TO ORDER

FOLLOW STEPS FOR ORDERING

 Designates optional step

1| SPECIFY MODEL

EP17624 Single Explosion Proof Magnetic Lock, Side Conduit, 600lbs

EP17624TJ Single Explosion Proof Magnetic Lock, Top Conduit, 600lbs

STEP NUMBER: 1

ORDERING EXAMPLE: **EP17624**

RELATED PRODUCTS

EXPLOSION PROOF EXIT SWITCHES

Hazardous location design for applications where flammable vapors are cause for concern, like clean room, chemical plant, or refinery environments by eliminating sparks.

[CLICK TO VIEW](#)



EXPLOSION PROOF EMERGENCY DOOR RELEASES

Hazardous location design for applications where flammable vapors are cause for concern, like clean room, chemical plant, or refinery environments by eliminating sparks.

[CLICK TO VIEW](#)

