



1190 / 2090 Spacesaver® Bolt Locks

Spacesaver® Extra Heavy Duty

Fully concealed and easily installed in 1.75" (4.44cm) frame or door stile

The Spacesaver®, first designed and patented by SDC, is a fundamental innovation in electric locking technology for access control applications.

The stainless steel bolt projects at right angles to the lock mechanism, allowing installation of Spacesaver® locks, by means of a simple cutout, in virtually any standard 1.75" frame, or in most door lock stiles. With the entire lock concealed, esthetic acceptability is complete, security is greater and installation in old or new construction is fast, easy and economical.

Powerful Extra Heavy Duty Design

The 1190 and 2090 Spacesaver® bolt locks are the most powerful commercial grade units available on the market. They are designed to provide years of trouble free operation. There are only three moving parts within the hefty solid metal body of the 1190A and five in the 2090A.

Powerful Extra Heavy Duty Solenoid

The solenoids are the strongest found in the industry for commercial or industrial grade applications. The power and strength of the solenoids far surpasses any competitive models.

All Spacesaver® lock solenoids are manufactured by SDC to precision specifications. SDC solenoids are capable of superior overall performance in both force and longevity, providing years of service.

Solid Stainless Steel Bolt

Greater security is provided by the 0.75" (19 mm) diameter solid stainless steel bolt. The bolt rotates freely, making attempts to tamper or cut extremely difficult.



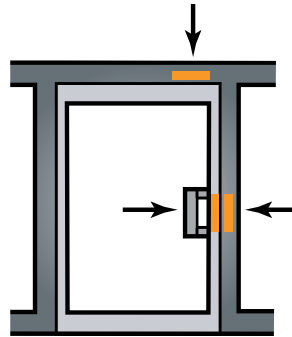
1190A



2090A

Three Point Installation

SDC Spacesaver® locks may be mounted in the frame header, side jamb or door lock stile.



1190A Failsafe

The 1190A is locked when energized. Recommended for safety applications, it is intended that the door unlock automatically when power is interrupted by the access control, power failure or signal from a fire life safety system.

- Bolt Throw 0.75" (19 mm)

2090A Failsecure

The 2090A is locked when de-energized and unlocked when energized. Recommended for security applications only, it is intended that the door automatically locks when power is interrupted by the access control or power failure.

- Bolt Throw 0.75" (19 mm)
- Auxiliary Locks
- Complies with "positive pressure" requirements of standard UL10C

- Listed US & Canada

Field Adjustable Auto-Relock Switch

The automatic relock switch keeps the bolt retracted while the door is open. The door depresses the ball switch assembly on closure, causing the bolt to project automatically locking the door. In addition the ball switch assembly is bi-directional, permitting the locks to be used on swinging and sliding doors.

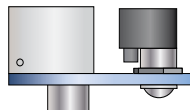


Fig. 1

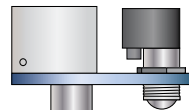


Fig. 2

The auto relock assembly is field adjustable to compensate for wide door gap. (See Figures 1 and 2.)



Uniform Building Code Compliant (UBC)

- Classified in accordance with Uniform Building Code standard 7-2, "Fire Test for Door Assemblies"

Protected by one or more of the following U.S. Patents:
4,021,065 4,634,155 4,099,752

SECURITY DOOR CONTROLS

sdccsecurity.com service@sdccsecurity.com

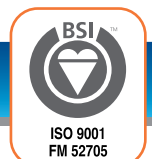


Figure 3A, 3B, 3C, 3D: Typical Frame Header or Side Jamb Installation

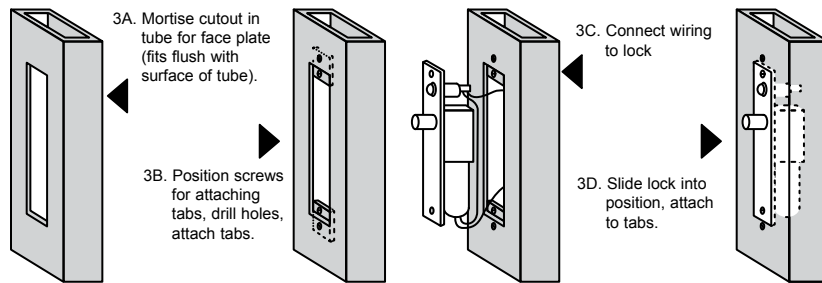
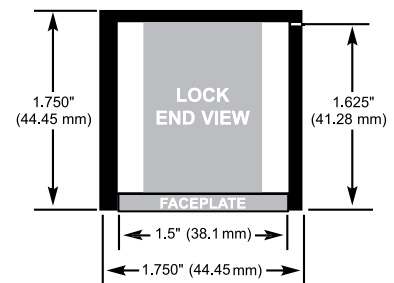


Figure 4



Model

1190AU Failsafe, 24VDC
2090AU Failsecure, 24VDC

U 630 Stainless Steel finish standard

Options

Bolt and Door Status

Door and lock status monitoring sensors are installed and concealed in the lock. The need for additional door and frame preparations is eliminated. Magnetic bolt status sensor is behind the faceplate to inhibit tampering.

Applications include: Remote Door and Lock Status; Mantraps; Air/Clean Rooms; Communicating Bathrooms; Door Hold Open Alarms and CCTV Activation.

- B** Magnetic Bolt Status Switch
 SPDT 0.25 Amp @ 30VDC
 Indicates bolt locked and bolt unlocked.
- D** Mechanical Door Position Switch
 SPDT 5 Amps @ 30VDC
 Integral to the auto relock ball switch assembly. Indicates, door closed and door open. Recommended for minimum security applications only

AC Operation

BR64XL Rectifier for AC operation

Specifications

Face Plate: 8"H x 1-1/2"W x 1/8"D
 (203.2 x 38.1 x 3.175mm)

Strike: 4"H x 1-1/2"W x 1/8"D
 (101.6 x 38.1 x 3.175mm)

Frame Inner Dimension Requirements:
1190A: 8"H x 1-1/2"W x 1-1/2"D (See figure 4)
 (203.2 x 38.1 x 38.1mm)
2090A: 10"H x 1-1/2"W x 1-1/2"D
 (254 x 38.1 x 38.1mm)

Bolt Material: Solid Stainless Steel

Bolt Diameter: 3/4" (19mm)

Bolt Throw: 3/4" (19mm)

Mounting Tabs: Two aluminum mounting tabs are provided for easy lock installation. (See figure 3B.)

1190A: 0.7 Amp @ 24VDC

2090A: Inrush 2.5 Amp,
 Continuous 0.5 Amp @ 24VDC

