

**602RF(A)(L) and 631RF(A)(L) tested according to UL Standard 1481, listing includes:**  
 Access Control Systems Unit ALVY      Burglar Alarm Systems Power Supply APHV  
 Releasing Device Accessory SYSW      Fire and Burglar Alarm Power Supply URTZ

**632RF(A)(L) Access Control Systems Unit ALVY**  
**632RF(A)(L), 634RF and 636RF UL listed as:**  
 General Purpose QQFU/QQFU7 Power Supply



602RFL



631RFL



632RFL



602RF / 631RF



632RF

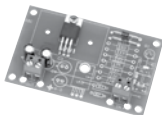
with optional power cord and 2 - CR4 modules



631RFA  
632RFA



634RF  
636RF



12VR

**Standard Features:**

- Modular design
- Filtered and regulated output
- Field selectable 12/24VDC
- Fire/Emergency release input
- Field selectable manual reset input ( n/a with 631RF(A) )



- Input, output and battery LED status indicators
- Thermal and short circuit protection with auto reset
- Battery charger
- Low battery disconnect

**FIELD SELECTABLE 12VDC OR 24VDC OUTPUTS** LIST

602RFL	1 Amp, class 2 output, less box	210.00
602RF	1 Amp, class 2 output, 12" W x 12" H x 3.75" D box	300.00
602RFA	1 Amp, class 2 output, 16" W x 14" H x 6.5" D box	370.00
631RFL	1.5 Amp, class 2 output, less box	260.00
631RF	1.5 Amp, class 2 output, 12" W x 12" H x 3.75" D box	350.00
631RFA	1.5 Amp, class 2 output, 16" W x 14" H x 6.5" D box	420.00
632RFL	2 Amp, class 2 output, less box	310.00
632RF	2 Amp, class 2 output, 12" W x 12" H x 3.75" D box	400.00
632RFA	2 Amp, class 2 output, 16" W x 14" H x 6.5" D box	460.00
634RF	4 Amp, field select one 4 Amp output, or two 2 Amp class 2 outputs	600.00
636RF	6 Amp, field select one 6 Amp output, or three 2 Amp class 2 outputs	700.00

**DUAL 12VDC AND 24VDC OUTPUT CAPABILITY** Add to List

12VR	500mA, 12VDC regulated and filtered output module With the power supply output set at 24VDC for locking devices and components, the addition of the 12VR provides a separate 12VDC 500 mA output for access controls or other 12VDC devices	50.00
------	--	-------

**OPTIONS** Add to List

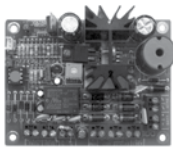
MR	Cover mounted manual reset switch for Fire/Emergency release <i>(not available on 631RF)</i>	36.00
PS-1	System On-Off push switch inside power supply enclosure	36.00
PS-1A	System On-Off push switch on enclosure cover	36.00
14-2	7 day - skip a day programmable timer. Automatically unlocks and locks all doors or specific doors on programmed days only.	240.00
PC	6 ft. power cord. Recommended for 1 Amp and 1.5 Amp, eliminating the need for AC conduit	36.00
KL	Key lock cover	36.00
220V/230V	230VAC, 50/60Hz	N/C



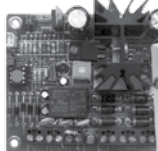
**SECURITY DOOR CONTROLS**  
 801 Avenida Acaso • Camarillo, CA 93012  
 Email: Service@sdcsecurity.com • www.sdcsecurity.com

Price List Effective February 15, 2009

Price List Effective February 15, 2009



621B



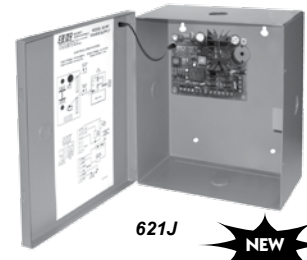
621P



**2 Control Relays Standard**



621PJ



621J



**Features**

- 12VDC or 24VDC field selectable output
- 1 Amp maximum, filtered and regulated output
  - 1 power limited or lock control relay output
  - 1 power limited unswitched access control output
- Two control inputs
  - 1 lock control trigger input, normally open (NO)
  - 1 supervised emergency release input (latching w/reset or non-latching)
- Short circuit and thermal overload protection
- Battery charger output

- Automatically switched to battery back-up when AC fails
- Board equipped with AC input, DC output and battery status LED indicator
- Enclosure equipped with AC input, DC output and battery status LED indicator

**Dimensions**

Power Supply Board: 3.95" W x 3" H x 1.625" D  
 Enclosure: 7.25" W x 8.375" H x 3.625" D

MODEL		LIST
621PJ	Power supply module and cabinet, door mount LED system status indicator UL Listed 24VAC, 40 VA plug-in transformer	195.00
621J	Power supply module, cabinet with door mounted LED system status indicator	175.00
621P	Power supply module, retrofit mounting hardware includes flush mount standoffs or Velcro. UL Listed 24VAC, 40 VA plug-in transformer	140.00
621B	Power supply module only, retrofit mounting hardware includes flush mount standoffs or Velcro	120.00



RB12V4

5 Amp Hour



RB12V7

8 Amp Hour

**Batteries**

RB12V4	12V/5Ah Battery. Specify 2 for 24V. 621PJ accommodates two.	40.00
RB12V7	12V/8Ah Battery. Specify 2 for 24V. 621PJ accommodates one.	60.00

SECURITY DOOR CONTROLS

801 Avenida Acaso • Camarillo, CA 93012

Email: Service@sdsecurity.com • www.sdsecurity.com

