



SECURITY DOOR CONTROLS

3580 Willow Lane, Westlake Village, CA 91361-4921 • (805) 494-0622 • Fax: (805) 494-8861
www.sdcsecurity.com • E-mail: service@sdsecurity.com

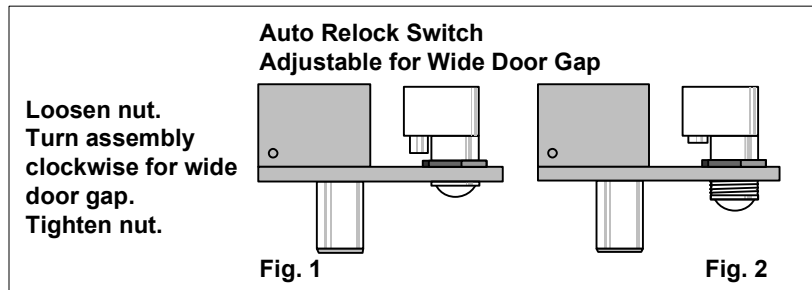
INSTALLATION INSTRUCTIONS 1490A

OVERHEAD INSTALLATION HORIZONTAL

1. Examine the top rail of the door for the most suitable location for the strike. Mark the door for the end of the strike closest to the lock stile, and make a corresponding mark on the header to line up with the first mark.
2. Locate center line of door thickness on the header and use the Template Sheet to determine the header and door cut-outs.

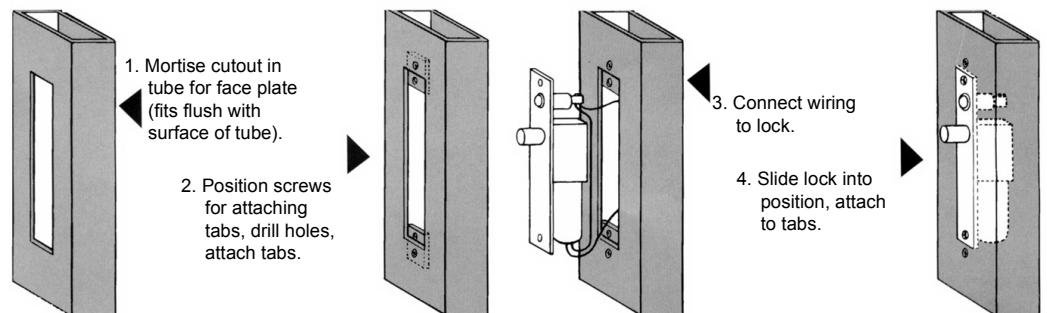
SIDE JAMB INSTALLATION VERTICAL

3. Examine the lock stile jamb for the point nearest the center of the door height, with space available for the lock and strike. Mark the door stile horizontal for the top end of the strike and make a corresponding mark on the jamb.
4. Locate center line of door thickness on the jamb and use Template Sheet to determine the cut-out to jamb, lining up the top of the cutout with the horizontal mark on the jamb. Center punch the tab mounting screw locations and counter sink for #10 screw. Saw or rout the cutout 1.26" x 8".
5. Attach the mounting tabs inside.
6. Attach power supply leads to lock leads. Handle the lock carefully; do not hang it by the wire leads. Insert wires into the header cavity carefully so they do not interfere with proper locating of the lock in the cutout.
7. Insert lock. Horizontally, the bolt end is nearest the lock stile. Vertically, the bolt must be at the top end of the cutout. Secure with #10-32 machine screw.
8. Using strike for a template, mark screw hole location on door and drill holes for screws supplied. Mortise as required. Attach strike.
9. The automatic relock switch is set for 1/8" clearance between the top of the door and transom bar or head jamb. Any additional gap may be compensated for by loosening the lock nut and turning the switch assembly clockwise until proper adjustment is reached. Be sure to tighten lock nut when adjustment is satisfactory.



Easy Installation or Servicing

All Space Saver locks are easily installed in any existing entrance merely by mortising out a cutout, attaching the wiring, inserting the lock, and bolting it into position with two attaching tabs. Cutting studs is no longer a problem or expense.



Any suggestions or comments to this instruction or product are welcome. Please contact us through our website or email engineer@sdsecurity.com

1490A

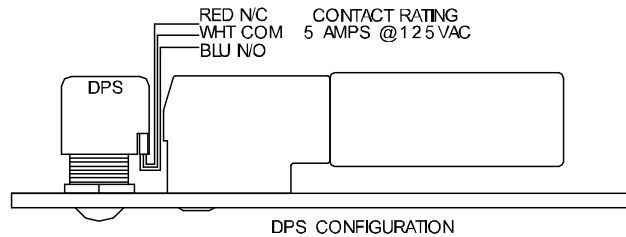
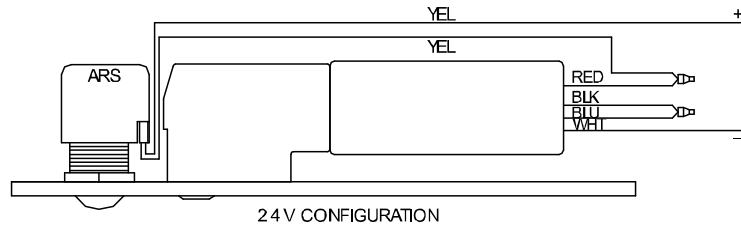
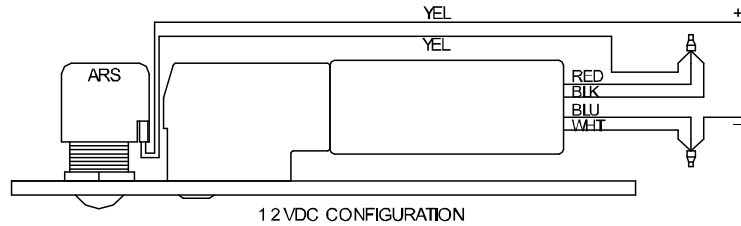
Face plate: 8" x 1-1/4" x 1/8" (203.2mm x 31.75mm x 3.175mm)

I.D. Req. 8" x 1-1/2" x 1-3/8"
(203.2mm x 38.1mm x 34.925mm)

Solenoid: Continuous duty
Dual Voltage:
12VDC @ .9 AMP
24VDC @ .45 AMP

Strike: M-Mortise 4" x 1-1/2" x 1/8" (101.6mm x 38.1mm x 3.175mm)

Bolt: 5/8" (15.88mm) dia. S.S., 1/2" (12.7mm) throw



TROUBLE SHOOTING

Problem	Solution
Bolt does not project	Check voltage and alignment of strike.
Bolt projects but chatters	Voltage too low.
Bolt will not retract	Strike misaligned

BOLT POSITION SENSOR (MAGNETIC)

B SPDT Indicates bolt locked or unlocked .25 Amp

DOOR POSITION SWITCH (MECHANICAL)

D SPDT Indicates door opened or closed 5 Amp