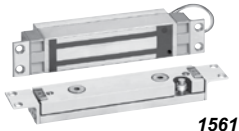


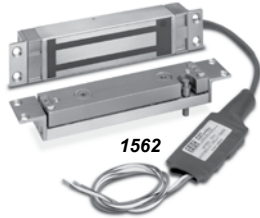
GWXT Auxiliary Locks CVXJ Burglary Resistant Electrically Operated Door Lock



UL10C Positive Pressure Compliant  
UBC Classified in accordance with Uniform Building Code standard 7-2 "Fire Test for Door Assemblies"



1561



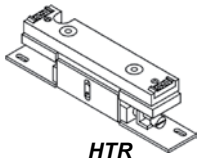
1562



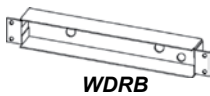
1565



1566



HTR



WDRB

**Features**

- Door static and relock sensor, detects door is closed, at rest and aligned before relocking
- Automatic voltage sensing input
- Lateral and vertical alignment adjustment
- Floating armature with alloy steel shear tabs

**Electrical Specifications**

- 1561 and 1562: 650/350 mA @ 12/24VDC Auto-Sensing
- 1565 and 1566: 800/400 mA @ 12/24VDC Auto-Sensing

**CONCEALED HI/Shear EMLock** List

**2,000 Lbs. Holding Force, 8" x 1-1/2" Lock**

1561	1-5/8" depth, integrated electronics for 1-3/4" to 2" frames	720.00
1562	1-1/4" depth, with external electronics, for 1-1/4" to 1-3/4" frames	720.00

**2,700 Lbs. Holding Force, 10-7/16" x 1-1/2" Lock**

1565	1-5/8" depth, integrated electronics, for 1-3/4" to 2" frames	780.00
1566	1-1/4" depth, external electronics, for 1-1/4" to 1-1/2" frames	780.00

**SPECIFY ARMATURE**

Armature supplied with lock. Specify type required: 1565/1566 ITC, FTC or HTC  
1561/1562 ITCM, FTCM or HTC

ITC	Standard mounting armature kit for aluminum and hollow metal doors with 7/8" to 1-1/8" deep top channels, wood doors and factory prepared hollow metal flush edge doors.	N/C
FTC	Mounting kit for field prepared horizontal mounting in hollow metal doors with flush edge.	N/C
HTC	Mounting kit for 1-15/16" deep herculite channels	N/C

**OPTIONS** Add to List

HTR	Herculite top rail armature adjustment bracket for leading edge adjustments.	340.00
B	Bond sensor indicates proper armature contact and reduced holding power due to improper armature contact or tampering. SPDT 0.25 Amp maximum (not available on 1562 and 1566)	110.00
D	Door position switch indicates door open or closed. SPDT 0.25 Amp maximum.	50.00
L-3	External LED status indicator, mounts separately through the frame and may be used to indicate lock is energized or wired to BAS bond sensor for door status.	16.00
WDRB	Wood door reinforcement box for 1565 and 1566	40.00
WDRBM	Wood door reinforcement box for 1561 and 1562	40.00

1591 MORTISE EMLock®



1591

**Holding Power 850lbs.**

Selectable Voltage 12VDC @ 800 mA, 24VDC @ 400 mA  
Finish: U 630 Stainless Steel  
Dimensions: 10"L x 1-7/16"H x 1-1/2"D

MODEL	DESCRIPTION	LIST
1591U	Single EMLock® for sliding doors	320.00

**ACCESSORIES** Add to List

LAB	Surface mount armature angle bracket for 1591 on sliding doors	48.00
AMP	Armature mounting plate for leading edge of door	40.00
DPS	Door position sensor for 1591 EMLock®	50.00



SECURITY DOOR CONTROLS  
801 Avenida Acaso • Camarillo, CA 93012  
Email: Service@sdcsecurity.com • www.sdcsecurity.com

Price List Effective February 15, 2009