



412N
413N
414N

410 SERIES - 1-3/4" x 1" EXIT SWITCH

OPTIONS - See Page 69

CK List

1 3/4" x 1" Button - Green Illuminated Lens - Dull Stainless Steel finish, specify R for optional red button

Narrow	Contact	Sign	
412NU	Momentary SPDT	PUSH TO EXIT	64.00
NEW 413NU	Integrated electronic timer, adj. 1-60 sec. 12/24VDC, 2A DPST Contact	PUSH TO EXIT	124.00
NEW 413PNU	Integrated pneumatic timer, adj. 1-180 sec. 12/24VDC, SPDT 3 Amp Contact	PUSH TO EXIT	300.00
NEW 414NU	Momentary DPDT	PUSH TO EXIT	78.00
415NU	AA (On/Off) DPDT	NONE	96.00

420 SERIES - 2" EXIT SWITCH

OPTIONS - See Page 69

CK List

2" Button, Green Illuminated Lens - Dull Stainless Steel Finish, specify R for optional red button



422
423
424



422A
423A

1 Gang	Contact	Sign	
422U	Momentary SPDT	PUSH TO EXIT	64.00
422AU	Momentary SPDT	♿ Symbol	64.00
423U NEW	Integrated electronic timer, adj. 1-60 sec 12/24VDC, 2A DPST Contact	PUSH TO EXIT	124.00
423PU	Integrated pneumatic timer, adj. 1-180 sec. 12/24VDC, SPDT 3 Amp Contact	PUSH TO EXIT	300.00
423AU	Integrated 1-60 sec Timer 12/24VDC, 2A DPST Contact 2" Button - Blue illuminated lens only	♿ Symbol	124.00
424U NEW	Momentary DPDT	PUSH TO EXIT	96.00
425U	AA (On/Off) DPDT	NONE	96.00

CODE COMPLIANT MANUAL RELEASE DEVICES

CK List

Code Compliant Manual Releasing Devices and Sensors

423M and 413MN exit switches USED TOGETHER WITH the MD31D PIR sensor comply with manual releasing device and sensor device requirements for Access-Controlled Egress Doors per:

IBC International Code 1008.1.3.4 NFPA 101 7.2.1.62 BOCA National Building Code 1017.4.5
IFC International Code 1008.1.3.4 NFPA 1 15.5.3.2 SBCCI Standard Building Code 1012.7

Code Compliant Manual Release Device

Code Compliant Features: Fixed 30 second timer, re-triggerable; Failsafe - lock releases when power to switch is interrupted; Sign - PUSH TO EXIT; CSFM Listed; Enterprise Engineering Laboratory Listed:

1 3/4"x1" Button, Green Illuminated Lens - Dull Stainless Steel Finish, Specify R for optional red lens



413MN



423M

Narrow	Contact	Sign	
NEW 413MNU	Integrated Fixed 30 sec. Timer 12/24VDC, 2 Amp DPST Contact	PUSH TO EXIT	130.00

2" Button, Green Illuminated Lens - Dull Stainless Steel Finish, Specify R for optional red lens

1 Gang	Contact	Sign	
NEW 423MU	Integrated Fixed 30 sec. Timer 12/24VDC, 2 Amp DPST Contact	PUSH TO EXIT	130.00

Code Compliant Egress Sensor

Code Compliant Features: PIR egress sensor with failsafe mode - lock releases when power to PIR sensor is interrupted. UL listed 294 Access Control System Units

Model	Color		
MD-31D-W	White	PIR Egress Sensor	V 220.00
MD-31D-B	Black	PIR Egress Sensor	V 220.00

Input: 12 or 24 VAC/DC @ 26mA max.

Contact: 2 SPDT Dry, 2 Amp @ 30VDC (38.1 H x 148.8 W x 38.1 D mm)

Operating temp: -20° F to 120° F (-29° C to 49° C)

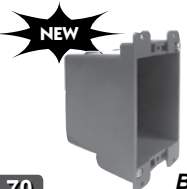
Dimensions: 1.5" H x 6.25" W x 1.5" D



MD-31D-W



MD-31D-B



BB1D

RETROFIT BACK BOX

BB1D	Single Gang 2.25" w x 3.75" h x 2.75" D	12.00
------	---	-------



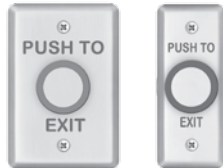
430 430N



441 - 444 446



451 451N
452 452N
453 453N



463 463N



474

430 SERIES - 1-1/2" MUSHROOM EXIT SWITCH CK List

1.5" Mushroom, Green Button Standard, Dull Stainless Steel Finish, Specify R For Optional Red Button

1 Gang	Narrow	2 Gang	Contact	Sign	
431CU	431CNU		AA (On/Off) NC SPST	none	100.00
431OU	431ONU		AA (On/Off) NO SPST	none	100.00
432CU	432CNU		Momentary NC SPST	EXIT	100.00
432OU	432ONU		Momentary NO SPST	EXIT	100.00
432KUR	432KNUR		Latching/ key reset DPST, Red	none	200.00
		433U	Momentary with Timer Module 1-60 sec. 12/24V AC/DC SPDT 2A Contact	EXIT	180.00
434U	434NU		Momentary DPST	EXIT	120.00
435U	435NU		AA (On/Off) DPST	none	120.00

440 SERIES - 2-5/8" MUSHROOM EXIT & PANIC SWITCHES CK List

2-5/8" Mushroom, Red Button Standard, Dull Stainless Steel Finish, Specify G For Optional Green Button

1 Gang	2 Gang	Contact	Sign	
	441U	AA (On/Off) DPST	none	178.00
	442U	Momentary DPST	EXIT	178.00
	443U	Momentary with Timer Module 1-60 sec. 12/24V AC/DC SPDT 2A Contact	EXIT	260.00
	444U	Momentary 2-DPST	EXIT	196.00
446U		Momentary DPST	EXIT	118.00

450 SERIES - VANDAL RESISTANT ALUMINUM EXIT SWITCH CK List

Stainless Steel Button - 1/4" Thick Aluminum Plate - Security Screws - Plated Finish Not Available

1 Gang	Narrow	Contact	Sign	
451V	451NV	AA (On/Off) SPDT	none	140.00
452V	452NV	Momentary SPDT	none	140.00
453PV	453PNV	Integrated Pneumatic Timer ADJ. 1-180 sec. SPDT contact	none	400.00

463 SERIES - VANDAL RESISTANT STAINLESS STEEL EXIT SWITCH CK List

Piezoelectric Stainless Steel Button - No moving parts - Integrated Time Delay - Red and Green Status Indicators
2mm Stainless Steel - Security Screws - Plated Finish Not Available

1 Gang	Narrow	Contact	Sign	
463U	463NU	Integrated 1-30 Sec Timer 12/24VDC, NO/NC 2A Contact	PUSH TO EXIT	130.00

470 SERIES - SANITARY, NO TOUCH, WAVE-TO-EXIT SWITCH CK List

- IR Sensor, 4" read range, Red, Green illuminated LED status. Control electric locks, strikes and automatic door operators.
- Entry/exit for sanitary environments including: bathrooms, hospitals, schools, cleanrooms, food processing, labs, or offices.
- Output: DPDT 3 Amp Dry Contact • Input: 25mA (standby); 55mA (active) @ 12VDC • Faceplate: 20ga stainless steel

1 Gang	Contact	Sign	
474U	DPDT	No Touch Exit	45.00

OPTIONS AND FINISHES CK Add to List

Options for 410, 420, 430, 440 Series

L1G	1 Green LED	16.00	LT	Tricolor LED - Red, Green, Amber	24.00
L1R	1 Red LED	16.00	E	Add Exit sign To AA Function Switch Only	8.00
L2	1 Red and 1 Green LED	24.00	B	No Exit sign (None) with Momentary Switch	N/C

Special Finish

450 / 460 / 470 Special finish is not available

Designate special finish suffix from below in lieu of U (stainless steel) in part number.

C	605 Bright Brass	D	606 Dull Brass	40.00
P	625 Bright Chrome	H	613 Oil Rubbed Bronze	40.00