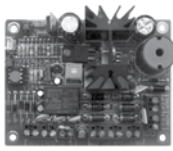
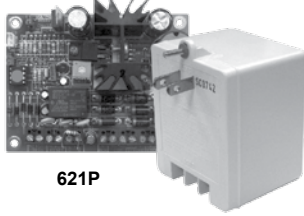


Price List Effective February 15, 2009



621B

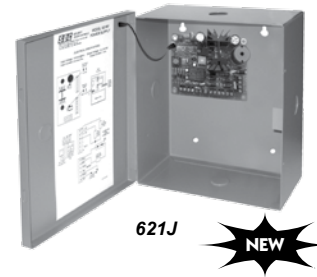


621P

2 Control Relays Standard



621PJ



621J



Features

- 12VDC or 24VDC field selectable output
- 1 Amp maximum, filtered and regulated output
 - 1 power limited or lock control relay output
 - 1 power limited unswitched access control output
- Two control inputs
 - 1 lock control trigger input, normally open (NO)
 - 1 supervised emergency release input (latching w/reset or non-latching)
- Short circuit and thermal overload protection
- Battery charger output

- Automatically switched to battery back-up when AC fails
- Board equipped with AC input, DC output and battery status LED indicator
- Enclosure equipped with AC input, DC output and battery status LED indicator

Dimensions

Power Supply Board: 3.95" W x 3" H x 1.625" D
 Enclosure: 7.25" W x 8.375" H x 3.625" D

MODEL		LIST
621PJ	Power supply module and cabinet, door mount LED system status indicator UL Listed 24VAC, 40 VA plug-in transformer	195.00
621J	Power supply module, cabinet with door mounted LED system status indicator	175.00
621P	Power supply module, retrofit mounting hardware includes flush mount standoffs or Velcro. UL Listed 24VAC, 40 VA plug-in transformer	140.00
621B	Power supply module only, retrofit mounting hardware includes flush mount standoffs or Velcro	120.00



RB12V4

5 Amp Hour



RB12V7

8 Amp Hour

Batteries

RB12V4	12V/5Ah Battery. Specify 2 for 24V. 621PJ accommodates two.	40.00
RB12V7	12V/8Ah Battery. Specify 2 for 24V. 621PJ accommodates one.	60.00

SECURITY DOOR CONTROLS

801 Avenida Acaso • Camarillo, CA 93012

Email: Service@sdsecurity.com • www.sdsecurity.com

