

SURE EXIT® SENSE BAR

DKK

PUSH TO EXIT

Field Applied Sign with green letters



Listed 4J82

Access Control System Units
Burglary Resistant Electronic Locking Mechanism



3773-0324:105



"Security Industry Finest"
ISC Expo

Standard Features

Actuation: Pressure Sense Technology; Tri-Failsafe

Voltage: 12/24VDC Voltage Sense Input

Current: 20 mA at Rest, 115 mA Active

Lock Output: SPDT, 3 Amp @ 30VDC

Alarm Shunt/Status Output: SPDT, 3 Amp @ 30VDC

Accessories Include: 10 ft. cable and connector; PT-2U Armored Power Transfer Loop

Standard length, 36"

MODEL	FINISH	LIST PRICE
PSB560V	628 Aluminum Anodized	330.00
PSB560Y	Black Anodized	330.00
PSB560C	605 Bright Brass	445.00
PSB560S	629 Bright Stainless Steel	445.00
PSB560U	630 Brushed Stainless Steel	445.00

Bars for wide doors

42	Bar for 42" Door. May be field cut.	N/C
48	Bar for 48" Door. May be field cut Ex: PSB560V-42	N/C



PT-2U
(Included with bar)

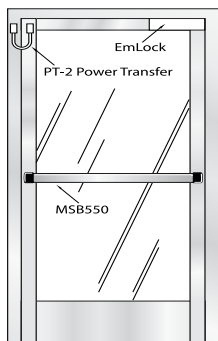


PT3

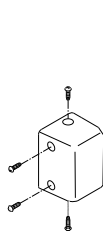
ACCESSORIES

	LIST
500GL-KIT One glass door mounting kit with adhesive for eight to ten bars	220.00
500GL-MB One glass door mounting kit without adhesive	120.00
500-SK Shim kit used to raise bar from door. Recommended for wood or hollow metal doors with uneven mounting surface.	24.00
Power Transfer:	
PT-3V Stainless steel armored loop with aluminum surface wire junction box	40.00

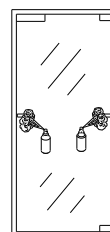
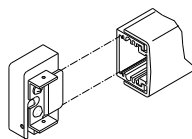
Standard Installation with standard mounting hardware



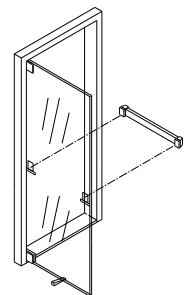
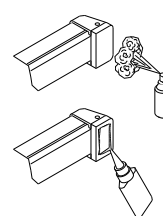
500GL Kit Glass Mount Installation



1. Assemble kit



2. Apply Adhesive



3. Mount

EXIT MECHANICAL SWITCH

DK

PUSH TO EXIT

Field Applied Sign with green letters



Listed 4J82

Access Control System Units
Burglary Resistant Electronic Locking Mechanism



3773-0324:106

Standard Features

Actuation: 1/8" total bar movement for mechanical switch actuation

Contact: SPDT, 5 Amp @ 30VDC (2nd switch optional)

Accessories include: PT-2U Power Transfer Loop

Standard length, 36"

MODEL	FINISH	LIST PRICE
MSB550V	628 Aluminum Anodized	210.00
MSB550Y	335 Black Anodized	210.00
MSB550C	605 Bright Brass	340.00
MSB550S	629 Bright Stainless Steel	340.00
MSB550U	630 Brushed Stainless Steel	340.00

2 SPDT Contacts

ADD 30.00

Add "2" for 2nd mechanical switch for dual-failsafe redundant operation; alarm shunt; or monitoring output. Ex: MSB550-2V

Bars for wide doors

42	Bar for 42" Door. May be field cut.	N/C
48	Bar for 48" Door. May be field cut Ex: MSB550V-42	N/C

SDG

SECURITY DOOR CONTROLS
801 Avenida Acaso • Camarillo, CA 93012
Email: Service@sdcsecurity.com • www.sdcsecurity.com

Price List Effective February 15, 2009