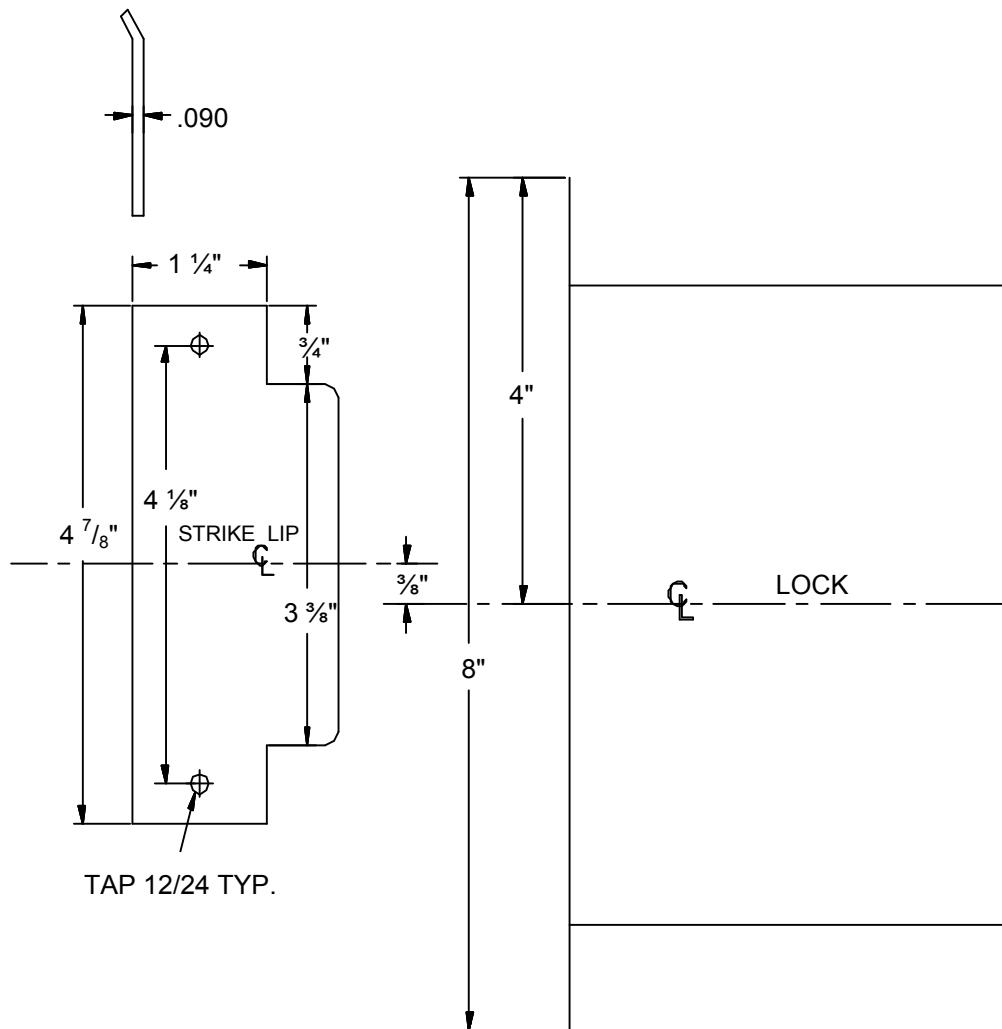




# SECURITY DOOR CONTROLS

3580 Willow Lane, Westlake Village, CA 91361-4921 • (805) 494-0622 • Fax: (805) 494-8861  
 www.sdcsecurity.com • E-mail: service@sdsecurity.com

## HITOWER ZR, R7500 SERIES TEMPLATE - 2" FRAMES



**NOT TO SCALE**

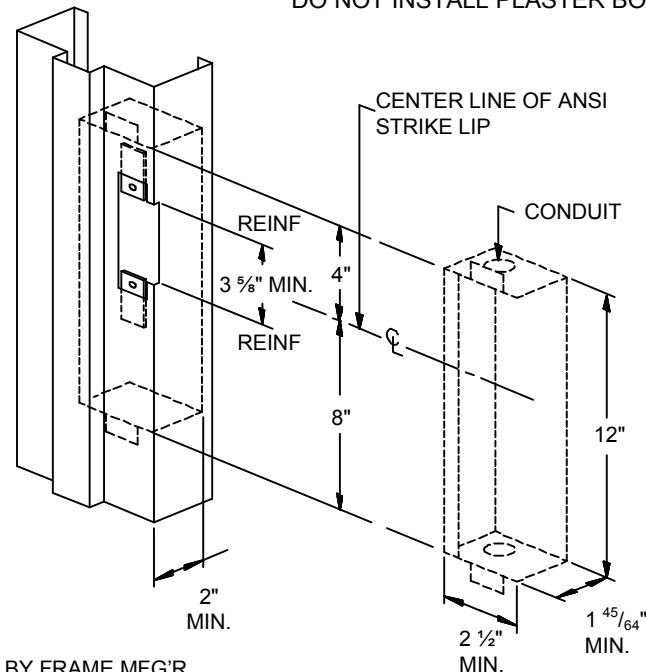
NOTE:  
 CONCRETE/  
 MASONRY  
 DETAIL  
 SHOWN

FOR STRIKE  
 RELATION TO  
 LOCK SEE  
 LEFT SIDE OF  
 TEMPLATE

NOTE:  
 MINIMUM FRAME  
 FACE 2"

RIGHT HAND  
 SHOWN,  
 LEFT HAND  
 OPPOSITE

DO NOT INSTALL PLASTER BOX



ELECTRICAL BOX BY FRAME MFG'R

**IMPORTANT**

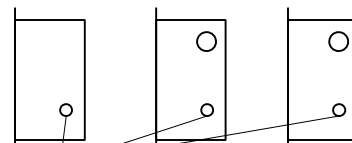
Details show space requirements for electric controller box. Allowances for different wall construction materials must be taken into consideration. Install conduit connectors in top of box before welding to frame.

**NOTE:**

THE 3-5/8" CLEARANCE BETWEEN THE STRIKE REINFORCEMENT TABS IS CRITICAL. \*MAXIMUM THICKNESS OF TABS .125

UL LISTED BOX AS SHOWN AVAILABLE FROM SECURITY DOOR CONTROLS PART #5000EB-2

### HOLES REQUIRED FUNCTIONS



KNOB B/SIDES	CYL OUTSIDE ONLY	CYL BOTH SIDES
7510	7520	7530
7540	7550	

### Door Prep. Only

Identify the lock and manufacturer by letter prefix. Review proper manufactures template requirements for **door prep only**. See details far left and above for frame prep.

SOURCE #	MODEL #
ZR SDC	7500
R Schlage	L9080