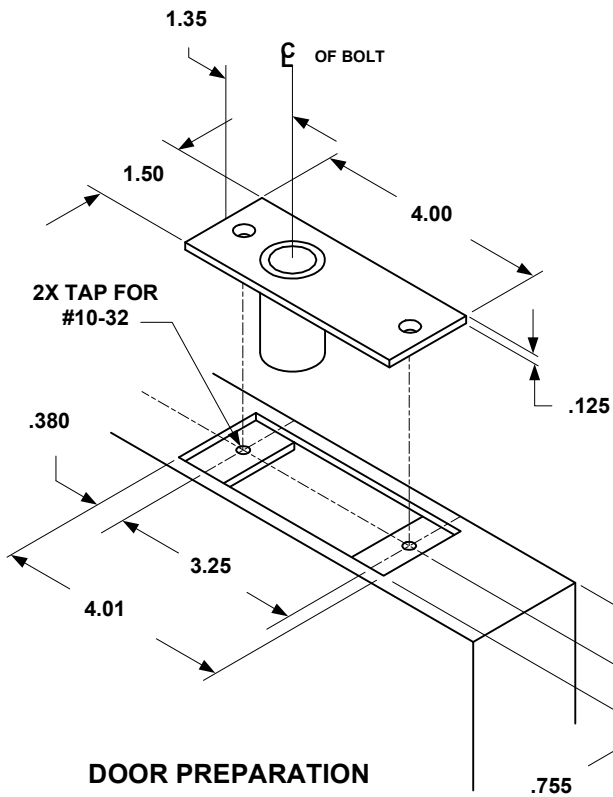
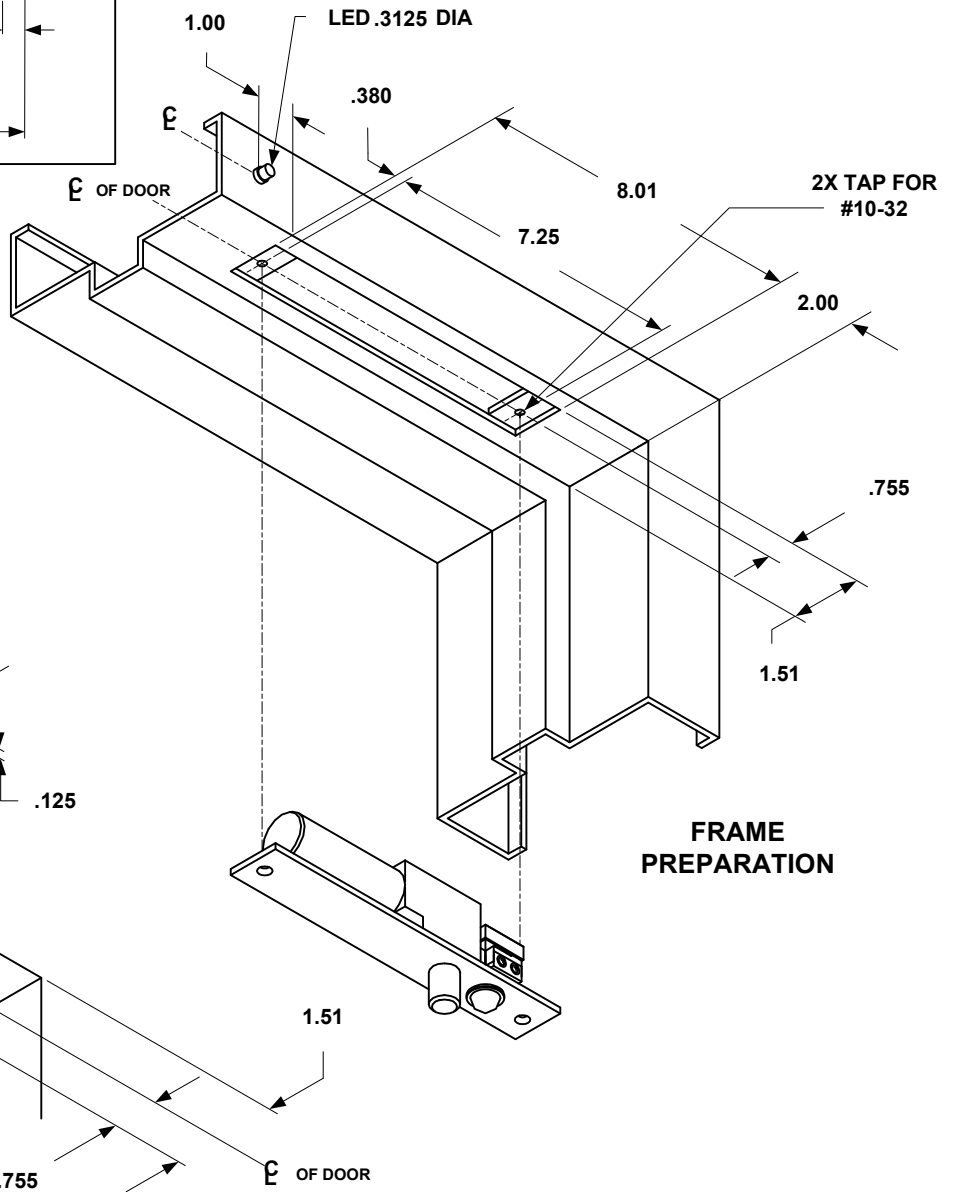
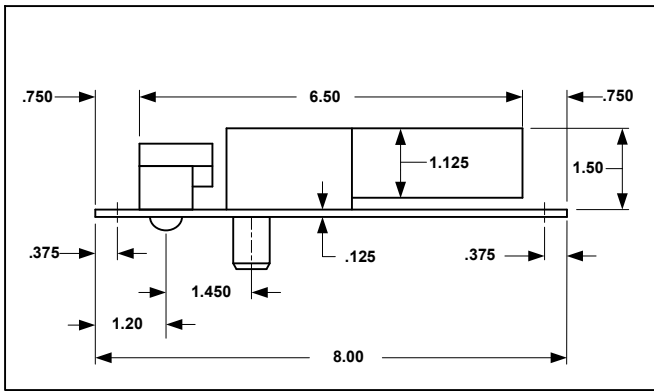


NOTE: TEMPLATE DIMENSIONS ARE SUBJECT TO CHANGE WITHOUT NOTICE



TECHNICAL DATA:

- FACE PLATE:** 8" x 1-1/2" x 1/8" (203.2mm x 38.1mm x 3.175mm)
- STRIKE:** 4" x 1-1/2" x 1/8" x 1-9/16" (101.6mm x 38.1mm x 3.175mm x 39.688mm)
- ID REQUIREMENTS:** 8" x 1-1/2" x 1-1/2" (203.2mm x 38.1mm x 38.1mm)
- BOLT:** 5/8" (15.875mm) DIA. NYLON WITH MAGNET INSERT
- BOLT THROW:** 5/8" (15.875mm)

	Security Door Controls 3580 Willow Lane Westlake Village, CA 91359 (805) 494-0622 Fax: (805) 494-8861 www.sdcsecurity.com E-mail: service@sdcsecurity.com
	<p>TEMPERATURE</p>

TEMPERATURE

FS23M

ORIG. DATE
02/05/99

DRAWING
2561

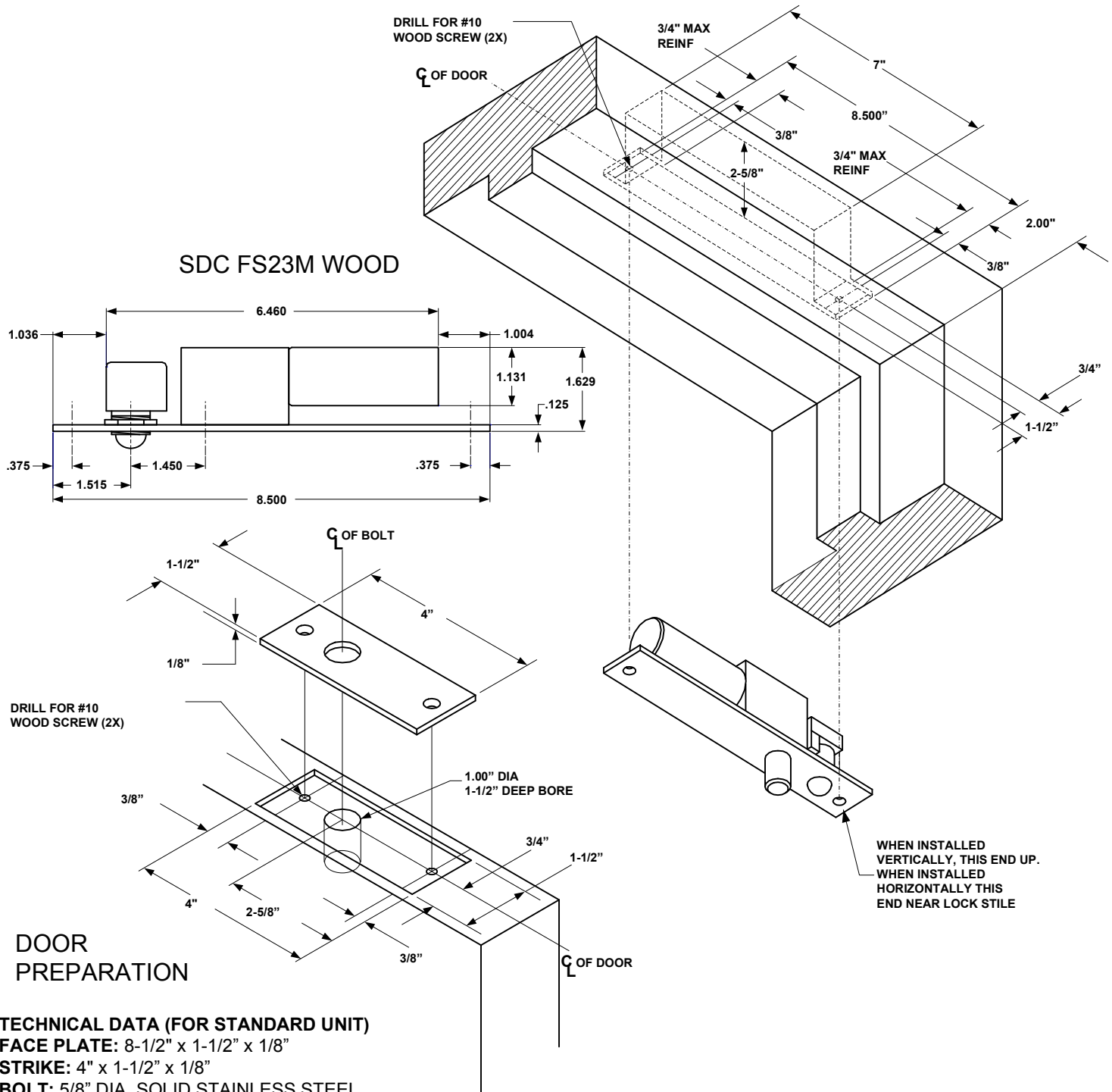


SECURITY DOOR CONTROLS

3580 Willow Lane, Westlake Village, CA 91361-4921 • (805) 494-0622 • Fax: (805) 494-8861
www.sdcsecurity.com • E-mail: service@sdsecurity.com

TEMPLATE FS23M WOOD

NOTE: TEMPLATE DIMENSIONS ARE SUBJECT TO CHANGE WITHOUT NOTICE.



DOOR PREPARATION

TECHNICAL DATA (FOR STANDARD UNIT)
FACE PLATE: 8-1/2" x 1-1/2" x 1/8"
STRIKE: 4" x 1-1/2" x 1/8"
BOLT: 5/8" DIA. SOLID STAINLESS STEEL
BOLT THROW: 3/4"

Any suggestions or comments to this instruction or product are welcome. Please contact us through our website or email engineer@sdsecurity.com