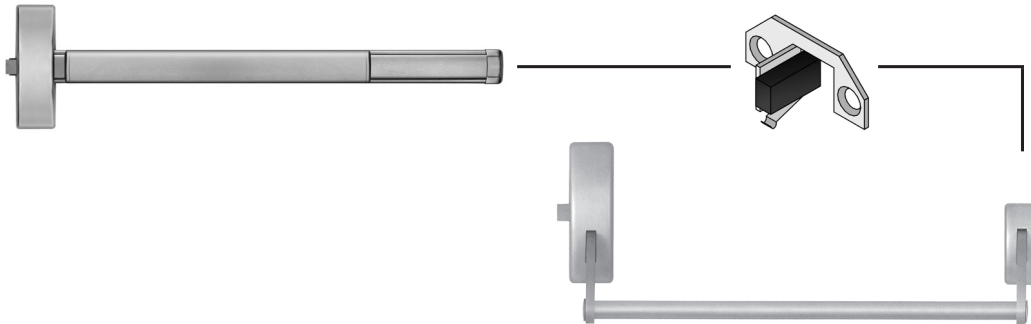


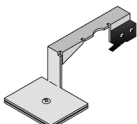


P.O. Box 6219, Westlake Village, CA 91359-6219
 3580 Willow Lane, Westlake Village, CA 91361-4921
 (805) 494-0622 · (800) 413-8783 · Fax (805) 494-8861
 Email: service@SDCsecurity.com www.SDCsecurity.com

Exit Device Switch Kits



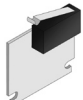
Switch kits are field installed in the inactive hinge pad of rim mount exit devices, mortise exit devices, concealed vertical rod exit devices and surface vertical rod exit devices.



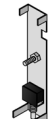
510



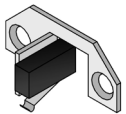
511



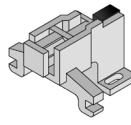
512



514



516



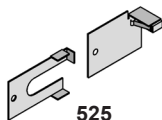
517



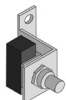
518



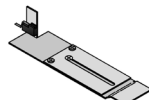
519



525



528



527

Switch Contact: SPDT, 5 Amp @ 30VDC

Applications:

- Activation of Delayed Egress Locks
- Electromagnetic Lock Release
- Request-to-Exit
- Alarm Shunt or Alarm Activation

Model

Make & Model to be Modified

510	Von Duprin 33, 35, 98, 99
510-2	Von Duprin 33, 35, 98, 99 DPDT
511	Von Duprin 55
512	Von Duprin 88
514	Dor-O-Matic 990, 1090, 1990, 2090
515	Sargent 9300, 9400, 9500
516	Sargent 9600, 9700, 9800, 9900
517	Adams Rite 8300, 8400, 8700, 8800
518	Precision Series 1100
518A	Precision Apex Series (2100 - 2800)
519	Jackson 1095
519-2	Jackson 1095 DPDT
520	Corbin 3000
521	Corbin 7000
525	Monarch 18 and 19
525-2	Monarch 18 and 19
526	Corbin ED8200
527	Sargent 8800, Arrow S3800
527-2	Sargent 80 DPDT
528	Sargent 20/60 and Yale 2100
531	Yale 7000 (Dogging mechanism required) Corbin 4000
535	Kawneer Mid Panel Line Dor-O-Matic 1390
536	Jackson 1295
539	Cal Royal 9800
540	Arrow
542	Hager 4700
590	Dor-O-Matic 1690

SECURITY DOOR CONTROLS

