



INSTALLATION INSTRUCTIONS

PD2090A

PANIC DEVICE TOP LATCH RELEASE BOLT LOCK FOR USE ON: DOR-O-MATIC: 990 / 1190 & KAWNEER

READ THOROUGHLY BEFORE INSTALLING

CAUTION: *This device is intended for center hung doors only*

INSTALLATION

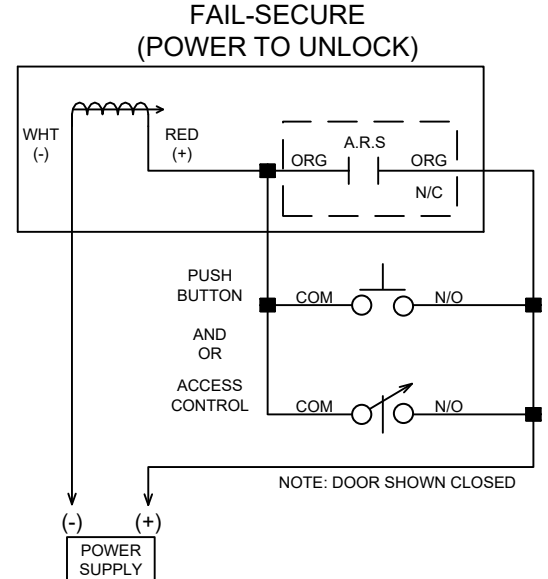
1. Review the installations shown in figures A through D. Center line of panic device latch determines location of release.
2. The locking bolt will function provided that the alignment allows for the bolt to drop into the top latch opening.
3. The bottom rod assembly must be removed.
4. Hollow metal doors that do not have a flush top would require a metal filler block. This block must be flush with the top of the door (required to engage the auto relock switch). This filler block is not supplied by SDC.
5. After reinforcement tabs have been installed, attach power leads as shown in wire diagram.
6. Secure the bolt lock into the mortised opening and fasten.

SPECIFICATION

Faceplate:	10" x 1-1/2" x 1/8"
I.D. Requirements:	10" x 1-1/2" x 1-1/2"
Solenoid:	24 VDC
(Continuous Duty 2 Stage)	Pull-in Coil – 57.6 watt / 2.4 amp at 24VDC Holding Coil – 8.4 watt / .35 amp at 24VDC
Bolt:	1/2" diameter x 1/2" throw
B:	Bolt position indicates bolt locked or unlocked 5 A. @ 30VDC
D:	Door position indicates door open or closed 5 A. @ 30VDC

TROUBLESHOOTING

Problem	Solution
Top latch will not stand up.	Adjust top latch.
Bolt will not retract.	Check voltage at lock. Check rating of transformer. Check for cracks in switch on side of lock body.
Bolt projects too soon.	Adjust auto relock switch, or verify that switch is positioned towards outside of door.
Bolt projects when door is open.	ARS has been bypassed. Check wiring.





TYPICAL INSTALLATION FOR PANIC LOCK

FIG. A

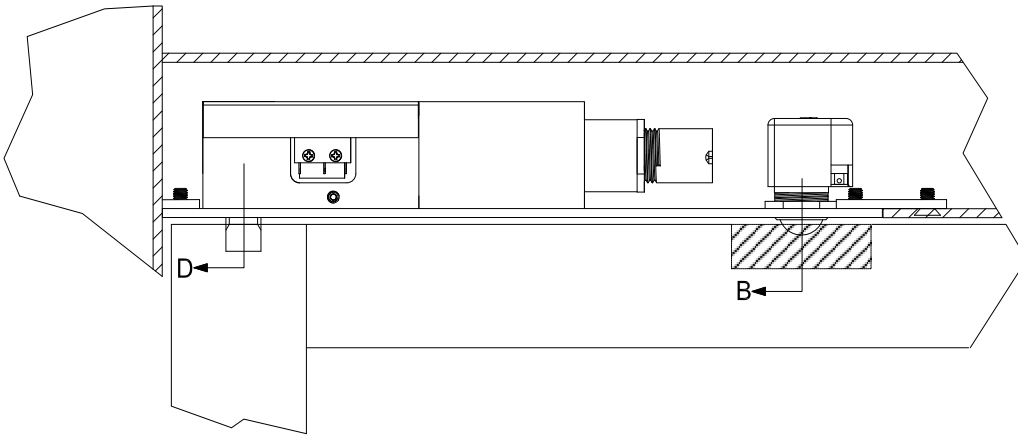
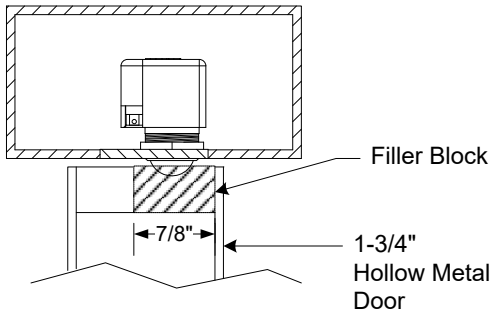


FIG. B

Hollow metal doors that are not top flush would require a filler block in order to engage the auto relock switch. Place the filler block towards the outside of the door opening to delay the relocking action of the bolt. This block must be flush with the top of the door. (Filler Block Not supplied by SDC).



Auto Relock Switch (ARS)
Adjustable for Wide Door Gap

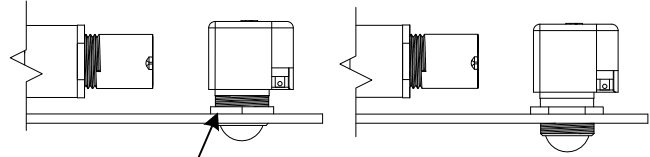


Fig. 1

Fig. 2

Loosen nut. Turn assembly clockwise for wide door gap. Tighten nut.

FIG. C

View of underside of header (Cut-Out Detail).

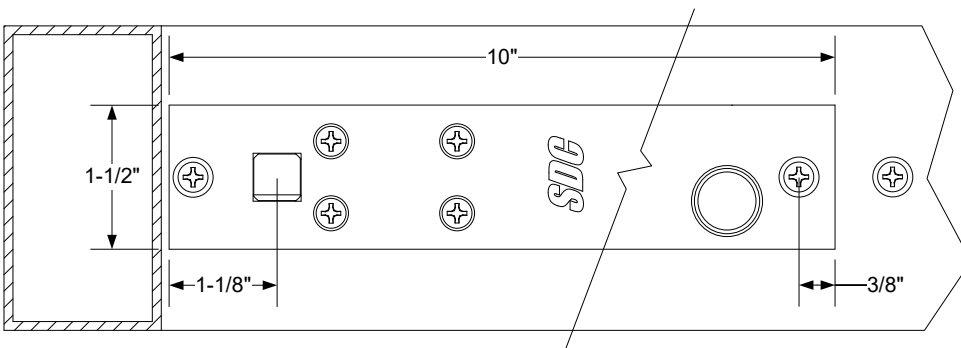
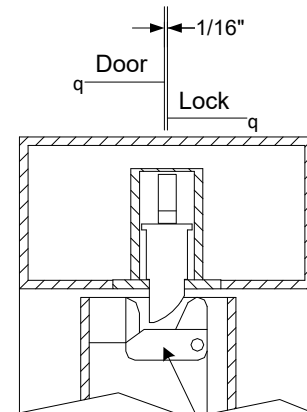


FIG. D

Side view of header.



DOR-O-MATIC DEVICE
NO. 990 / NO. 1190
AND KAWNEER