

RIM DEVICES STANDARD STRIKES

SURFACE / Standard VERTICAL ROD DEVICES Strike

Rim Strikes List



ST1P 22.00
 Standard for S6100P
 Projection: 13/16" (21mm)



ST1F 22.00
 Standard for S6100F
 Projection: 13/16" (21mm)

Optional Mullion Strike List



Optional for mullion application

ST1MP **ST1MF** 74.00
 For 6100P For 6100F
 Projection: 7/8" (22.5mm)

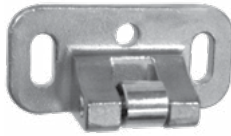
MORTISE STRIKE List



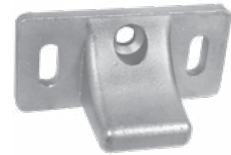
For use on 1-3/4" standard or 2-1/4" thick single door, and 2-1/4" double door with overlapping astragal and coordinator

ST3F **ST3P** 20.00
 Standard for S6300F Standard for S6300P

Top Strikes List



ST2P 20.00
 Standard top strike for S6200P
 Projection: 29/32" (23mm)

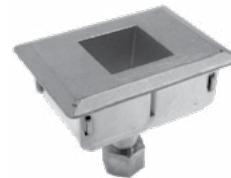


ST2F 20.00
 Standard top strike for S6200F
 Projection: 1-1/8" (29mm)

Bottom (Floor) Strikes List

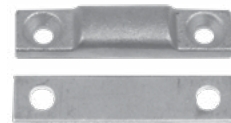


ST28P 22.00
 Standard floor strike for S6200P



ST28F 33.00
 Standard floor strike for S6200F
 Mortise: 2-1/4" (57mm)

Optional Threshold Strikes List



ST28T 16.00
 Optional floor strike for using threshold openings

Projection: 3/8" (9.5mm)

OPTIONAL DOUBLE DOOR STRIKE List



ST2DF 52.00
 Optional for pairs of doors with rim mount device.

Projection: 1-15/16" (49mm)

REMOVABLE MULLION List



KR90F 694.00
 Standard Key Removable Mullion Less Key Cylinder
 For Panic Exit and Fire Exit Rim Mount Devices.

Length: 8ft
 Material: 2" 11 Gauge Steel Tube
 Finish: Primer gray

OPTIONAL CYLINDER List

RIM-CYL-KA 36.00

Rim Cylinder, keyed alike - see page 39 for more info

