

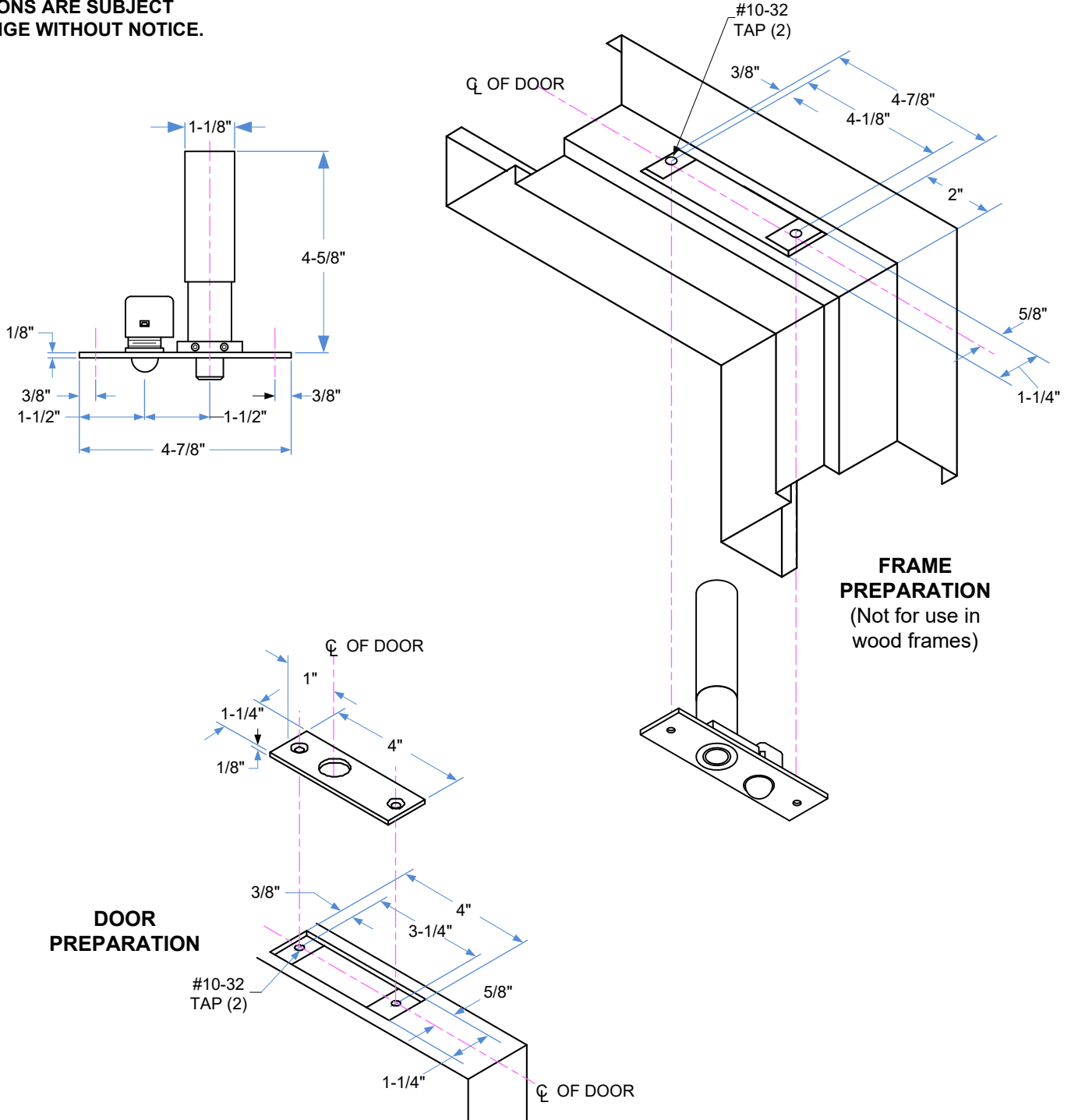


INSTALLATION INSTRUCTIONS

160 / 260 SERIES CONVENTIONAL MORTISE BOLT LOCKS

DIMENSIONAL REFERENCES

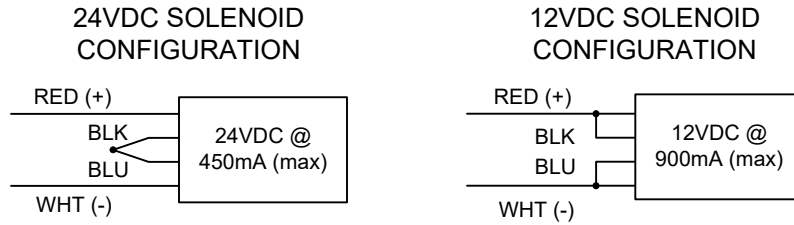
**NOT TO SCALE.
DIMENSIONS ARE SUBJECT
TO CHANGE WITHOUT NOTICE.**



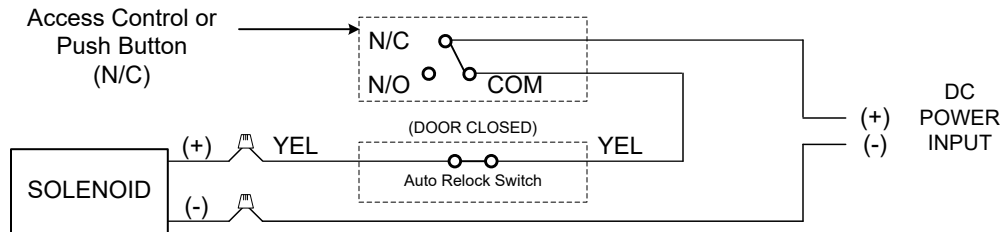


LOCK WIRING

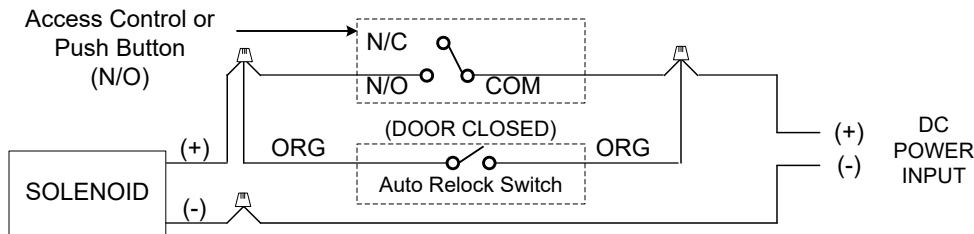
Solenoid Voltage Configuration:



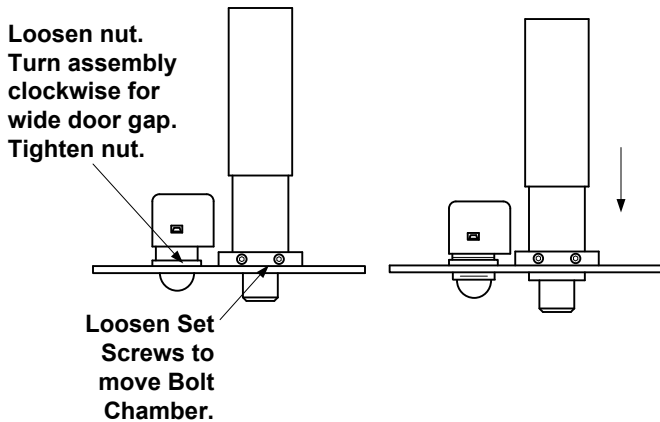
160 – Fail-Safe Bolt Lock



260 – Fail-Secure Bolt Lock



Adjustable for Wide Door Gap Auto Relock Switch (ARS) & Bolt



Dual Voltage Solenoid:

12VDC @ .9 Amp (Max) Continuous Duty
24VDC @ .45 Amp (Max) Continuous Duty

TECHNICAL DATA

FACE PLATE:	4-7/8" x 1-1/4" x 1/8"
STRIKE:	4" x 1-1/4" x 1/8"
ID REQUIREMENTS:	4-7/8" x 1-1/4" x 4-5/8"
BOLT:	1/2" DIA. STAINLESS STEEL
BOLT THROW:	1/2"
160 FAIL-SAFE:	LOCKED WHEN ENERGIZED
260 FAIL-SECURE:	UNLOCKED WHEN ENERGIZED
SOLENOID:	12/24VDC CONTINUOUS DUTY
AUTO RELOCK SWITCH:	ADJUSTABLE BALL PLUNGER TYPE