

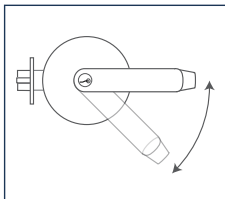
E76 Series

Standalone Electronic Mortise Locksets



SDC battery powered electronic door locks and keyless entry system provide controlled access for basic and multi-level convenience requirements. Priced to compete with entry-level brands, SDC standalone locksets are loaded with features professionals expect with hardwired systems. Additionally, E70 series keypads comes standard with all of SDC's EntryCheck® features such as door sense/inhibit inputs industry professionals have become accustomed to from SDC keypads.

The SDC E76 series includes an SDC mortise lock and is an indoor/outdoor standalone electronic battery powered solution, providing controlled access for basic and multi-level high security requirements. The E76 locksets are keypad or PC software programmable, and combine multiple access technology with efficient motorized locksets.



When locked, the built-in clutch permits the handles to operate without retracting the latch, reducing potential for damage.



MODELS

E76 Standalone Mortise Lockset



STANDARD FEATURES

- Keypad programmable
- 3,000 users, 32 temporary users
- 4 to 6 digit PIN codes
- Passage mode option
- 32 access groups, schedules and holidays
- 4 authority levels
- Keypad tamper lockout
- Mechanical key override
- Battery powered (4 AA)
- Blue backlit cast metal keys
- Weather & vandal resistant
- Retrofits existing lock door prep
- Motorized SDC mortise lockset
- Vandal resistant lever clutch mechanism
- Request-to-exit (REX)
- Door position status (DPS)
- Visual status indicators (LED)



OPTIONAL FEATURES

- Keypad with integrated proximity reader
- Keypad with integrated proximity reader and software
- Deadbolt for privacy



APPLICATIONS

MORTISE LOCK FEATURES

SDC fully featured ANSI grade 1 mortise lockset with complete application flexibility for new construction or retrofit of major brand mechanical locks. Replaces most mechanical locks. Order with SDC trim or less trim. Compatible with Schlage trim provided by others.

SOFTWARE FEATURES

Expanded Support & Control - Bluetooth enabled point and click microsoft PC-based software. Manage individual door parameters, access schedules, user groups, holidays, temporary users.

Clone Lock Settings - lock settings and related parameters are easily cloned to other locks, permitting quick multi-lock installations

Data Import - all lock parameters and user data can easily be imported from existing databases, locks, or spreadsheets.

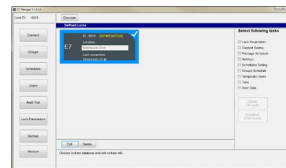
Database Backup Utility - password protected SQL database may be saved on any PC.

Wireless Information Transfer - lock programming and audit trail may be uploaded or downloaded using a Bluetooth enabled PC or laptop.

User Reports - users may be exported to Excel spreadsheets where information is easily sorted or printed.

Audit Trail Information - locks will maintain a record of the last 10,000 events to provide increased accountability. Audits may be downloaded to Excel spreadsheets where information is easily analyzed, sorted or printed.

- User entries logged with time and date
- Remote input activation is logged
- Door forced/door ajar/duress alarms are logged



E76PS, E76+PS
Includes bluetooth enabled software!

CROSS REFERENCE

Series	E75	E76	E77
Lockset	Cylindrical	Mortise	Exit Device
Keypad Only	E75K	E76K, E76+K	E77K
Integrated Prox	E75P	E76P, E76+P	E77P
Integrated Prox & Software	E75PS	E76PS, E76+PS	E77PS
Privacy Feature	E75KL, E75PL	-----	-----

[CLICK TO VIEW](#)

[CLICK TO VIEW](#)

Mortise lock with deadbolt available in K, P or PS keypad function. Throwing the deadbolt bypasses the keypad.



E76+PQLEEQ

SPECIFICATIONS

	E76K, E76+K	E76P, E76+P	E76PS, E76+KPS
Function	Keypad Only	Keypad w/ Prox Reader	Keypad w/ Prox Reader & Software
Power	AA Alkaline Batteries (4) or 30mA @ 12 VDC	AA Alkaline Batteries (4) or 30mA @ 12 VDC	AA Alkaline Batteries (4) or 30mA @ 12 VDC
Battery Lifespan	100,000 cycles	100,000 cycles	100,000 cycles
Inputs	Request-to-Exit (1) Door Position Status (1)	Request-to-Exit (1) Door Position Status (1)	Request-to-Exit (1) Door Position Status (1)
Output	Auxiliary Relay (1)	Auxiliary Relay (1)	Auxiliary Relay (1)
Contact	SPDT 1 Amp @ 30 VDC Resistive	SPDT 1 Amp @ 30 VDC Resistive	SPDT 1 Amp @ 30 VDC Resistive
Operating Temperature	-4°F to +140°F (-20°C to +60°C)	-4°F to +140°F (-20°C to +60°C)	-4°F to +140°F (-20°C to +60°C)
Operating Humidity	5% to 95% non-condensing	5% to 95% non-condensing	5% to 95% non-condensing
Latchbolt	¾" Throw	¾" Throw	¾" Throw
Deadbolt*	1" Throw	1" Throw	1" Throw
Backset	2¾"	2¾"	2¾"
Strike	47/8" ANSI A115.2	47/8" ANSI A115.2	47/8" ANSI A115.2
Door Thickness	1¾" - 21/8"	1¾" - 21/8"	1¾" - 21/8"
Supported Operating Systems	-----	-----	Windows 7, 10 (32-Bit and 64-Bit Systems)
Processor	-----	-----	2GHz or Faster Recommended
RAM	-----	-----	2GB or More Recommended
Hard Disk Space	-----	-----	1GB or More Recommended
PC User Requirements	-----	-----	Windows Administrative Rights

* For "+" models only.






CERTIFICATIONS

UL 10C Positive Pressure Fire Tests of Door Assemblies
ULC-S104 Standard Method for Fire Tests of Door Assemblies

HOW TO ORDER

FOLLOW STEPS FOR ORDERING

 Designates optional step

<p>1 SPECIFY MODEL E76 Standalone Mortise Lockset</p> <p>2 SPECIFY FUNCTION K Keypad Only P Keypad w/ Prox Reader PS Keypad w/ Prox Reader & Software +K Keypad & Manual Deadbolt +P Keypad w/ Prox Reader & Manual Deadbolt +PS Keypad w/ Prox Reader, Software & Manual Deadbolt</p> <p>3 SPECIFY KEYPAD FINISH Q 626 Dull Chrome  B Matte Black P 625 Bright Chrome C 605 Bright Brass</p>	<p>4 SPECIFY HANDING L Left Hand LR Left Hand Reverse R Right Hand RR Right Hand Reverse</p> <p>5 SPECIFY TRIM* G Galaxy Rose E Eclipse Rose N Nova Rose 07** Schlage 07 Rose GE Galaxy Escutcheon EE Eclipse Escutcheon NE Nova Escutcheon 07E** Schlage 07 Escutcheon</p> <p><small>* Key cylinder not included, order separately. ** Available in 630 dull stainless finish only.</small></p> <p>6 SPECIFY TRIM FINISH Q 626 Dull Chrome  P 625 Bright Chrome C 605 Bright Brass</p>	
---	---	--

STEP NUMBER:	1	2	3	4	5	6
ORDERING EXAMPLE:	E76	P	Q	L	GE	Q

RELATED PRODUCTS

COMPATIBLE KEY CYLINDERS

- CYL-6KAQ** Mortise Cylinder, 6-Pin, 1 1/8" Length, Keyed Alike
- CYL-6KDQ** Mortise Cylinder, 6-Pin, 1 1/8" Length, Keyed Different
- 863M*** ILCO 863M Schlage "L" Cam

* For use with "+" models only.

DOOR POSITION STATUS (DPS)

Magnetic door contacts and electromechanical ball switch assemblies provide a means of monitoring door status.

[CLICK TO VIEW](#)



PROX CARDS, FOBS & TAGS

- HID1326-10** Proximity Card Pack, HID Compatible, Quantity 10
- HID1326-25** Proximity Card Pack, HID Compatible, Quantity 25
- HID1326-100** Proximity Card Pack, HID Compatible, Quantity 100
- HID1346-10** Proximity Key Fob Pack, HID Compatible, Quantity 10
- HID1346-100** Proximity Key Fob Pack, HID Compatible, Quantity 100
- PTAG-10** Proximity Disc Tag Pack, HID Compatible, Quantity 10
- PTAG-25** Proximity Disc Tag Pack, HID Compatible, Quantity 25

