

# **SDC** Security Door Controls

801 Avenida Acaso, Camarillo, Ca. 93012 • (805) 494-0622 •  
www.sdcsecurity.com • E-mail: service@sdsecurity.com

## **INSTALLATION INSTRUCTIONS 1511-390AMP RETROFIT ARMATURE MOUNTING PLATE**

For customers with high security requirements, the 1511-390MP Armature Mounting Plate provides an easy solution for replacing Locknetics 390+ Series with SDC's Grade 1, 1510 Series Emlock<sup>®</sup>(sold separately).

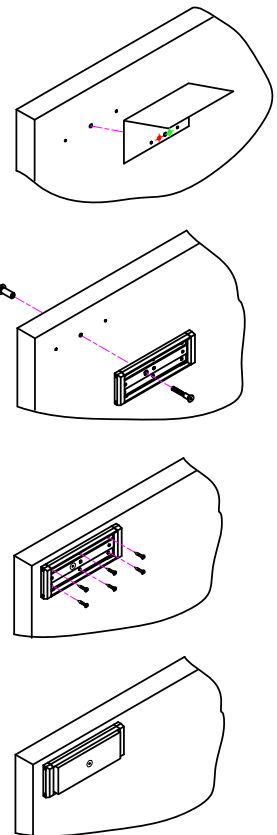
The 1511-390AMP mounts to the existing sex bolt hole using the existing armature hardware, while only requiring only a minor modification to the frame.

### **Advantages:**

- Uses the existing sex bolt prep and hardware. No additional holes are required through the door.
- Armature Mounting plate comes pre-tapped with the new armature mounting holes, saving time for the installer.
- All required hardware is included.
- When using the supplied template, only a slight modification is required to the frame. The existing holes will be concealed.
- Compatible with SDC's 1510 Series (1650 lb. holding force) or 1570 Series (1200 lb. holding force) EmLock<sup>®</sup>.

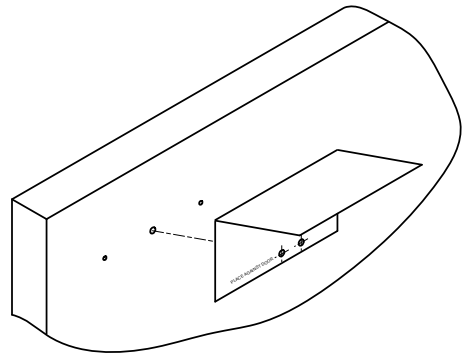
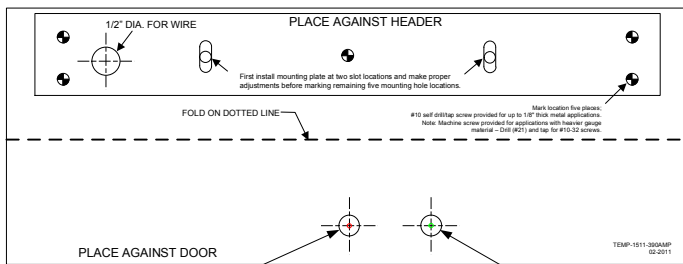
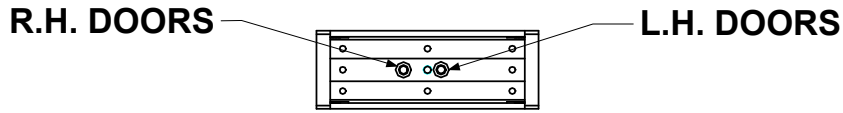
### **1511-390AMP Installation:**

- Align the existing sex bolt hole on the door with it's corresponding hole on the supplied template (LH or RH). Mark and drill header holes for the new SDC EmLock<sup>®</sup>.
- Attach the Armature Mounting Plate to the door with the existing sex bolt hardware.
- Secure the Armature Mounting Plate to the door with the screws provided.
- Attach the Armature to the mounting plate using the supplied hardware. Attach the SDC lock mounting plate to the header



Any suggestions or comments to this instruction or product are welcome. Please contact us through our website or email engineer@sdsecurity.com

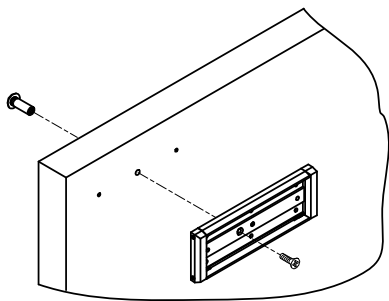
The 1511-390AMP mounts to the existing sexbolt hole using the existing armature hardware.



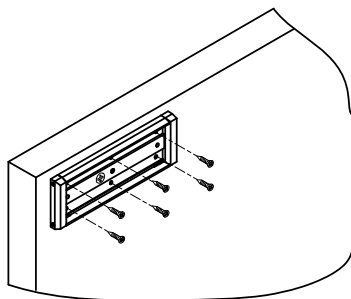
EXISTING SEX  
BOLT HOLE  
R.H. DOORS

EXISTING SEX  
BOLT HOLE  
L.H. DOORS

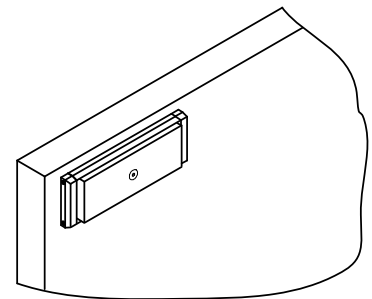
ALIGN EXISTING SEX BOLT HOLE ON THE DOOR, WITH IT'S CORRESPONDING HOLE LOCATION ON THE TEMPLATE (L.H. or R.H.). MARK AND DRILL HOLES FOR THE NEW SDC LOCK.



ATTACH ARMATURE  
MOUNTING PLATE TO  
DOOR WITH EXISTING  
SEX BOLT HARDWARE.



SECURE ARMATURE  
MOUNTING PLATE TO  
DOOR WITH SCREWS  
PROVIDED.



ATTACH ARMATURE TO  
MOUNTING PLATE.

**R.H. DOOR SHOWN**

**Refer to the 1500 EmLock® Installation Manual for mounting and wiring instructions.**