

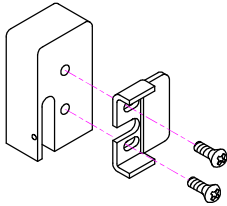


INSTALLATION INSTRUCTIONS

500GL-KIT GLASS MOUNT INSTALLATION MSB550 & PSB560

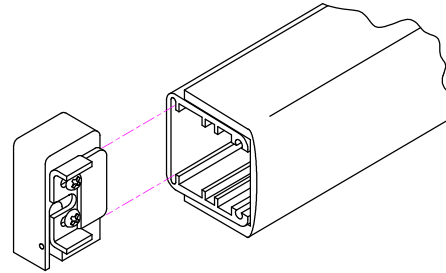
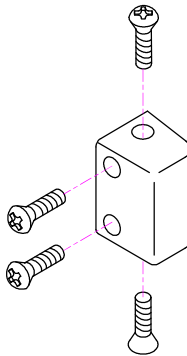
Step 1

Attach bar mounting brackets to glass mounting blocks.



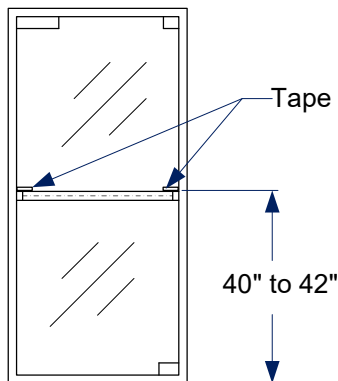
Step 2

Secure glass mounting base assembly to each end of the bar assembly. Secure plastic end caps to bar. Do not tighten all the way (loose fit during installation will allow mounting blocks to be placed flat against the glass). Once mounting blocks adhere to glass, connect power leads to device and then tighten screws.



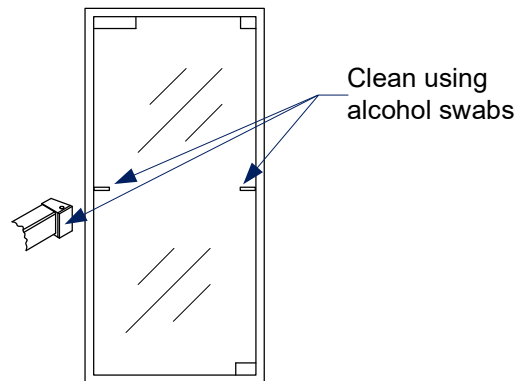
Step 3

Using tape, mark bar location on outside of glass door.



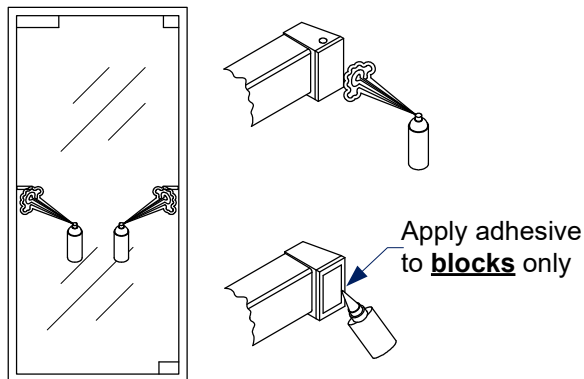
Step 4

Clean glass and mounting blocks with alcohol swabs. Allow alcohol to dry.



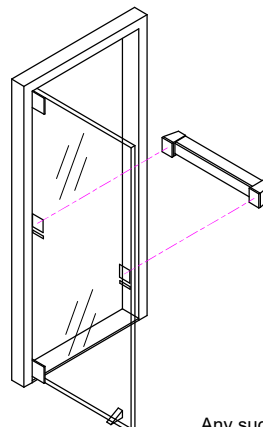
Step 5

Apply hardener primer to glass and mounting blocks. Wait 3 minutes and then apply adhesive to **blocks** only.



Step 6

Press and hold bar firmly in place against the glass door for approximately 3 minutes until bar is secured to door.



Any suggestions or comments to this instruction or product are welcome. Please contact us through our website or email engineer@sdsecurity.com