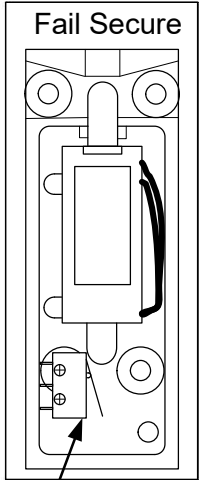




INSTALLATION INSTRUCTIONS

290 CABINET LOCK

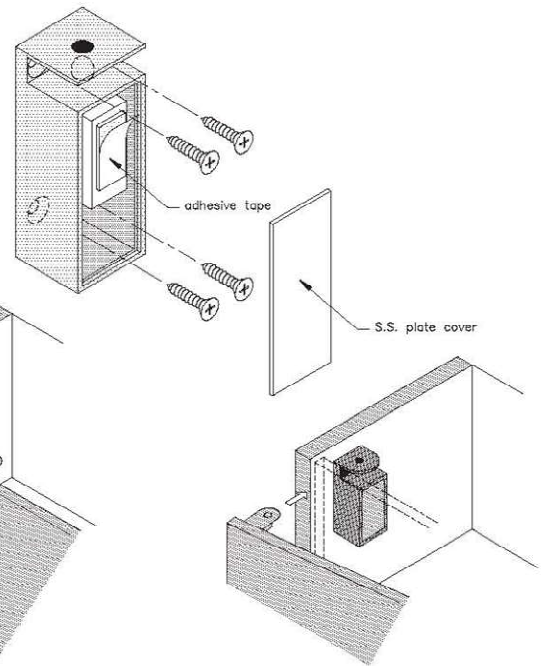
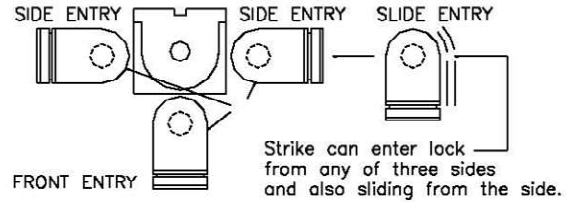
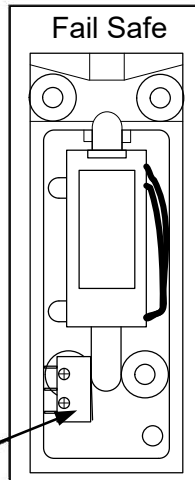
The cabinet lock is designed to be installed into cabinets and lockers, etc., with either swing or sliding doors. The lock is supplied in the Fail-Secure: "Power to open" configuration set by the factory.



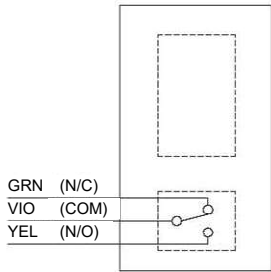
CHANGING LOCK MODE OF OPERATION

Fail Secure to Fail Safe:

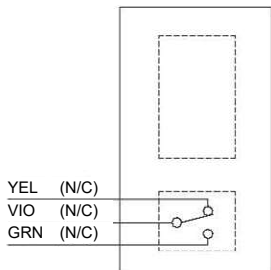
1. Remove the two rear solenoid screws.
2. Reverse solenoid position.
3. Secure solenoid and replace wire in opposite hole.



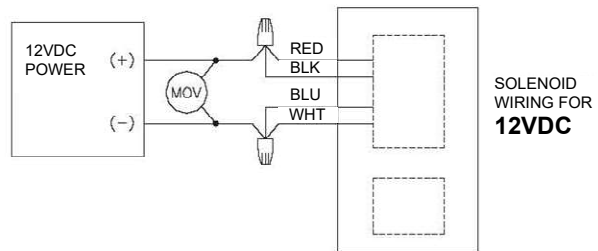
ELECTRICAL SPECIFICATION: Dual Voltage - 300/150 mA@ 12/24VDC



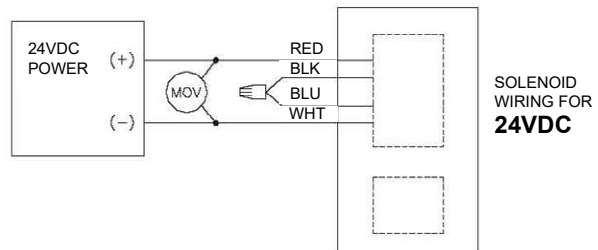
LOCK STATUS SWITCH FOR FAIL SECURE



LOCK STATUS SWITCH FOR FAIL SAFE



SOLENOID WIRING FOR 12VDC

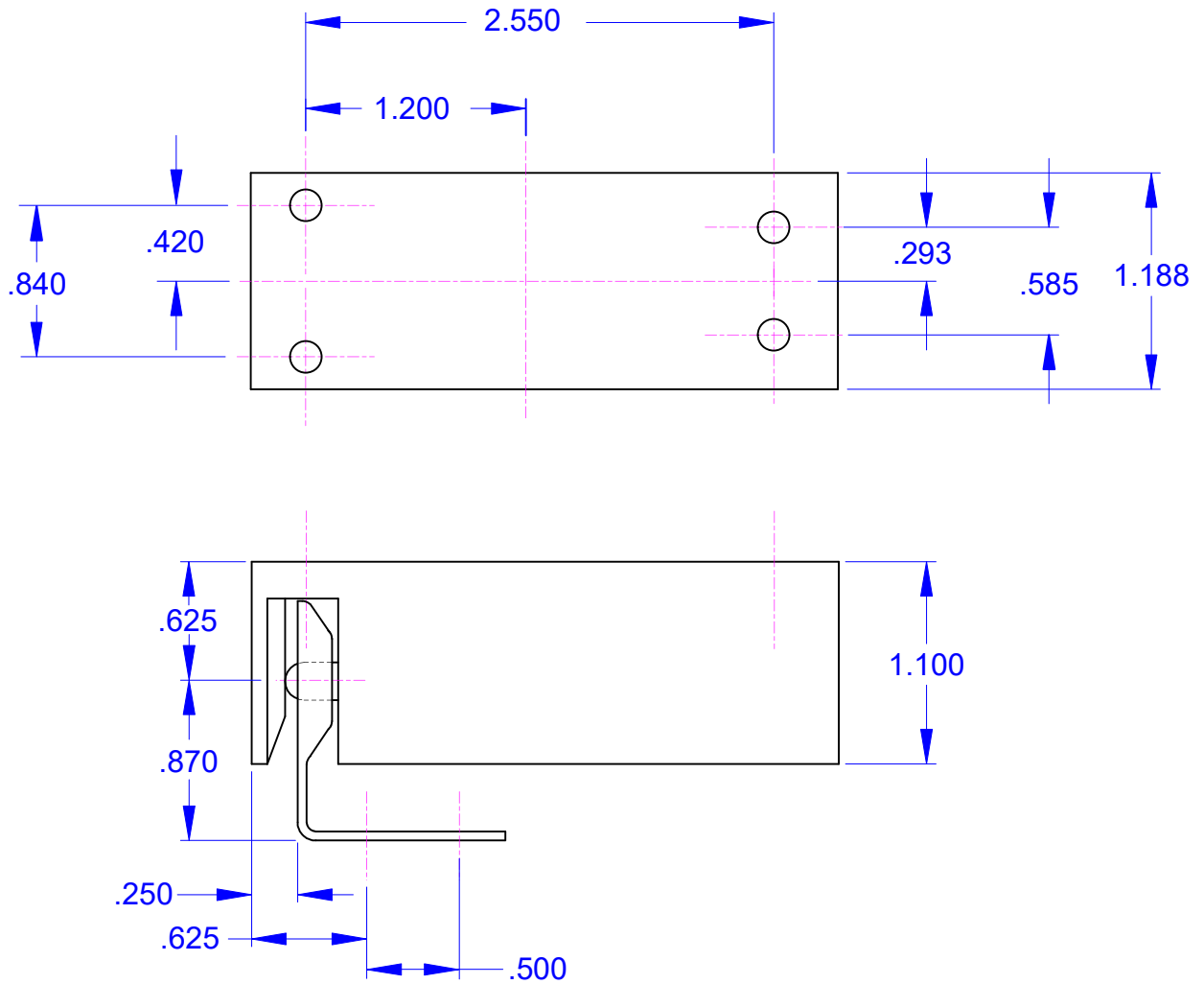


SOLENOID WIRING FOR 24VDC

Any suggestions or comments to this instruction or product are welcome. Please contact us through our website or email engineer@sdsecurity.com



290 CABINET LOCK MOUNTING TEMPLATE



DRAWING MAY NOT BE TO SCALE. USE
DIMENSIONAL CALL-OUTS ONLY.