



PUSH TO EXIT

Field Applied Sign with green letters



Listed 4J82

Access Control System Units
Burglary Resistant Electronic Locking Mechanism



3773-0324:105



"Security Industry Finest"
ISC Expo

STANDARD FEATURES

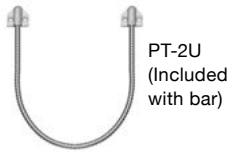
- Actuation:** Pressure Sense Technology; Tri-Failsafe
- Voltage:** 12/24VDC Voltage Sense Input
- Current:** 20 mA at Rest, 115 mA Active
- Lock Output:** SPDT, 3 Amp @ 30VDC
- Alarm Shunt/Status Output:** SPDT, 3 Amp @ 30VDC
- Accessories Include:**
10 ft. cable and connector; PT-2U Armored Power Transfer Loop

Standard length, 36"

| MODEL | FINISH | LIST PRICE |
|----------------|-----------------------------|---------------|
| PSB560V | 628 Aluminum Anodized | 381.00 |
| PSB560Y | Black Anodized | 381.00 |
| PSB560S | 629 Bright Stainless Steel | 517.00 |
| PSB560U | 630 Brushed Stainless Steel | 517.00 |

Bars for wide doors

| | |
|---|------------|
| 42 Bar for 42" Door. May be field cut. | N/C |
| 48 Bar for 48" Door. May be field cut <i>Ex: PSB560V-42</i> | N/C |

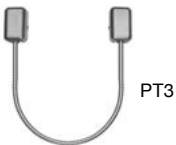


PT-2U
(Included with bar)

ACCESSORIES

LIST

| | | |
|------------------|--|---------------|
| 500GL-KIT | One glass door mounting kit with adhesive for eight to ten bars | 262.00 |
| 500GL-MB | One glass door mounting kit without adhesive | 145.00 |
| 500-SK | Shim kit used to raise bar from door. Recommended for wood or hollow metal doors with uneven mounting surface. | 27.00 |

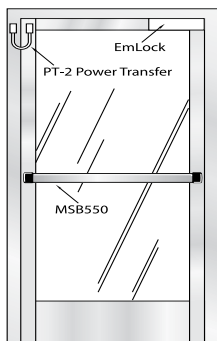


PT3

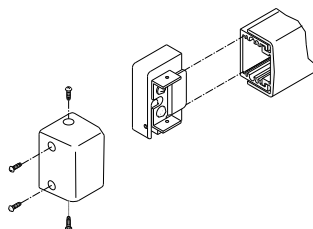
Power Transfer:

| | | |
|--------------|--|--------------|
| PT-3V | Stainless steel armored loop with aluminum surface wire junction box | 50.00 |
|--------------|--|--------------|

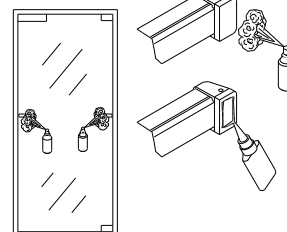
Standard Installation with standard mounting hardware



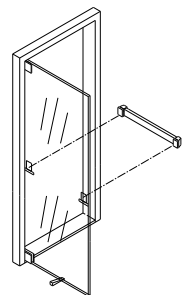
500GL Kit Glass Mount Installation



1. Assemble kit



2. Apply Adhesive





3. Mount

EXIT MECHANICAL SWITCH Distributor Discount Code **DK**



PUSH TO EXIT

Field Applied Sign with green letters

 **Listed 4J82**
 Access Control System Units
 Burglary Resistant Electronic Locking Mechanism

 3773-0324:106

STANDARD FEATURES
Actuation: 1/8" total bar movement for mechanical switch actuation
Contact: SPDT, 5 Amp @ 30VDC (2nd switch optional)
Accessories include: PT-2U Power Transfer Loop

Standard length, 36"

| MODEL | FINISH | LIST PRICE |
|----------------|-----------------------------|---------------|
| MSB550V | 628 Aluminum Anodized | 236.00 |
| MSB550Y | 335 Black Anodized | 244.00 |
| MSB550S | 629 Bright Stainless Steel | 392.00 |
| MSB550U | 630 Brushed Stainless Steel | 392.00 |

2 SPDT Contacts **ADD 32.00**
 Add "2" for 2nd mechanical switch for dual-failsafe redundant operation; alarm shunt; or monitoring output. *Ex: MSB550-2V*

Bars for wide doors

| | |
|--|------------|
| 42 Bar for 42" Door. May be field cut. | N/C |
| 48 Bar for 48" Door. May be field cut <i>Ex: MSB550V42</i> | N/C |

EXIT MECHANICAL SWITCH - OUTDOOR WEATHER RESISTANCE Distributor Discount Code **DK**



PUSH TO EXIT

Field Applied Sign with green letters

STANDARD FEATURES
OUTDOOR, WEATHER RESISTANCE
Water Sealed Switches
Actuation: 1/8" total bar movement for mechanical switch actuation
Contact: SPDT, 5 Amp @ 30VDC (2nd switch included)
Accessories include: PT-3V Power Transfer Loop, 2 SPDT Contacts included

Standard length, 36"

| MODEL | FINISH | LIST PRICE |
|-------------------|-----------------------|---------------|
| MSB550-2VW | 628 Aluminum Anodized | 388.00 |
| MSB550-2YW | 335 Black Anodized | 388.00 |

Bars for wide doors

| | |
|---|------------|
| 42 Bar for 42" Door. May be field cut. | N/C |
| 48 Bar for 48" Door. May be field cut <i>Ex: MSB550-2VW42</i> | N/C |