


Devices covered by this template:

(4x) DEVICE MOUNTING HOLES (4th hole shown on Trim Template)
TRIM: DRILL 5/16" CLEARANCE HOLES ON PUSH SIDE,
15/32" HOLES ON PULL SIDE.

METAL: DRILL / TAP FOR 1/4"-20
MACHINE SCREWS.

SEXBOLTS: DRILL 5/16" CLEARANCE
HOLES ON PUSH SIDE, 3/8" ON
PULL SIDE.

FOLD HERE 

CAUTION

NOT USE DOOR EDGE

THIS SIDE UP FOR RHR DOOR

WOOD: PRE-DRILL 1/8" HOLES

TO FACE OF STOP

—2-7/16"—

_____ OF _____
DEVICE

1-3/16"

19/32"

OPTIONAL 1/2"dia.
WIRE RUN

2-9/32"

2-3/4"

8-3/16"

– AFTER EXIT DEVICE IS MOUNTED,
INSTALL END CAP BRACKET
CENTERED ON DEVICE C

4th Hole is off template. Refer to Trim Template for inside and outside install.

7/8"

(2x) DEVICE MOUNTING HOLE- DO NOT DRILL THRU DOOR METAL: DRILL / TAP FOR 1/4"-20 MACHINE SCREWS.

WOOD: PRE-DRILL 1/8" HOLES.

FOLD HERE

PLACE THIS SIDE ON DOOR

PLACE THIS SIDE ON FRAME STOP

_____ ¢ OF _____
DEVICE

CL OF STRIKE

—2-5/8"—

DRILL / TAP FOR 12-24 AND INSTALL
SCREW AFTER FINAL ADJUSTMENTS

FRAME STOP

DOOR

OLD HERE

Any suggestions or comments to this instruction or product are welcome. Please contact us through our website or email engineer@sdsecurity.com

P:\INST INSTRUCTIONS\EXIT DEVICES\TEMP-S6103-SP03 REV B 01-25 Page 1

THIS SIDE UP FOR LHR DOOR

FOLD HERE
CAUTION
DO NOT USE DOOR EDGE



SECURITY DOOR CONTROLS ■ WWW.SDCSECURITY.COM
801 Avenida Acaso, Camarillo, CA 93012
[t] 800.413.8783 ■ 805.494.0622 ■ E-mail: service@sdsecurity.com

TEMPLATE-S6103-SP03

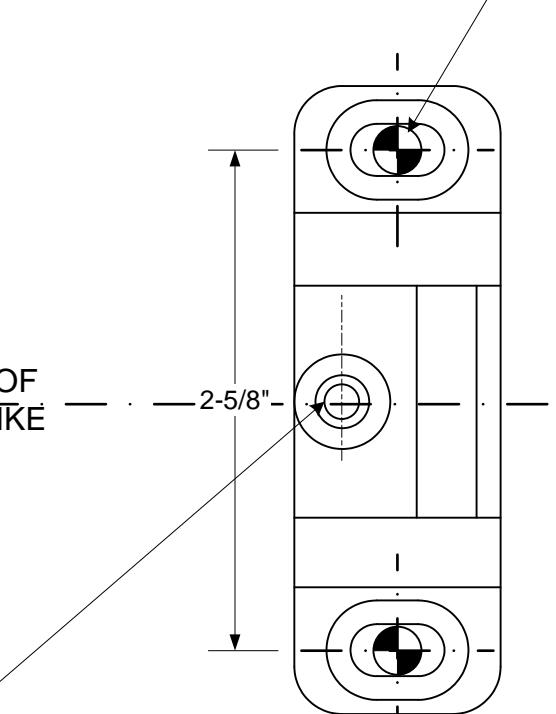
Devices covered by this template:

**Panic / Fire Rim Exit Device with 03 Night-Latch Pull Plate
LHR PREP**

(2x) STRIKE MOUNTING HOLES

METAL: DRILL / TAP FOR 1/4" - 20 MACHINE SCREWS

WOOD: PRE-DRILL 1/8" HOLES



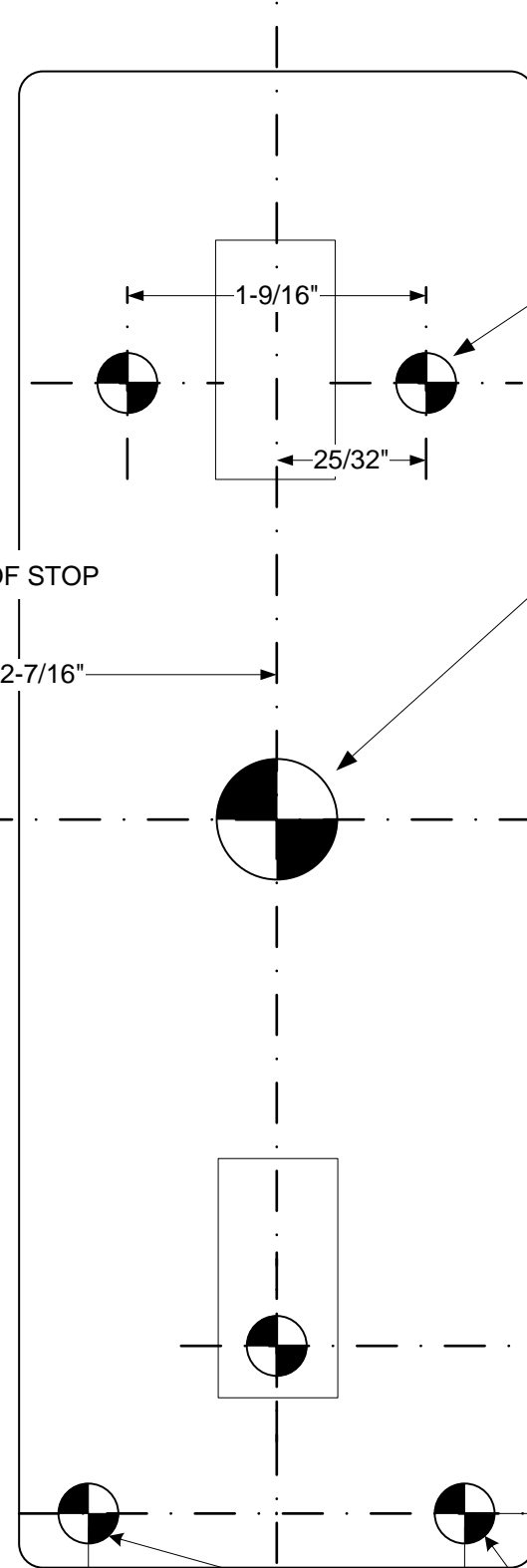
PLACE THIS SIDE ON FRAME STOP

PLACE THIS SIDE ON DOOR

TO FACE OF STOP

CL OF STRIKE

CL OF DEVICE



(3x) DEVICE MOUNTING HOLES

TRIM: DRILL 5/16" CLEARANCE HOLES ON PUSH SIDE,
15/32" HOLES ON PULL SIDE.

5/8" CLEARANCE HOLE FOR RIM CYLINDER.

(2x) END CAP BRACKET HOLES

METAL: DRILL / TAP FOR 1/4"-20
MACHINE SCREWS.

WOOD: PRE-DRILL 1/8" HOLES.

SEXBOLTS: DRILL 5/16" CLEARANCE
HOLES ON PUSH SIDE, 3/8" ON
PULL SIDE.

OPTIONAL 1/2"dia.
WIRE RUN

AFTER EXIT DEVICE IS MOUNTED,
INSTALL END CAP BRACKET
CENTERED ON DEVICE C

4th Hole is off
template. Refer
to Trim Template
for inside and
outside install.

(2x) DEVICE MOUNTING HOLE- DO NOT DRILL THRU DOOR

METAL: DRILL / TAP FOR 1/4"-20 MACHINE SCREWS.

WOOD: PRE-DRILL 1/8" HOLES.

40"
Watch for special
mounting height
requirements
FINISHED FLOOR

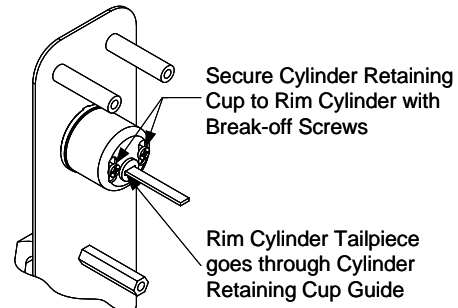
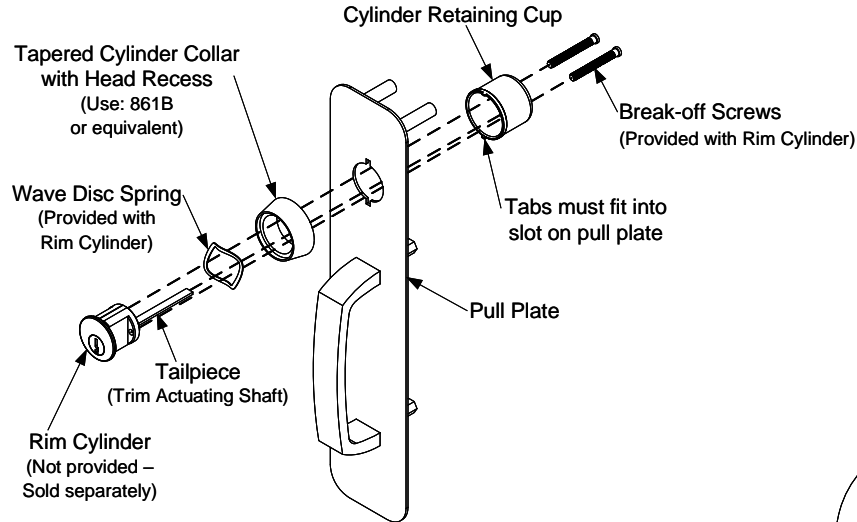
INSTALLATION INSTRUCTIONS

SP03U

S6100 RIM SATURN ESCUTCHEON 03 NIGHTLATCH PULL PLATE

INSTALLING RIM CYLINDER TO PULL PLATE

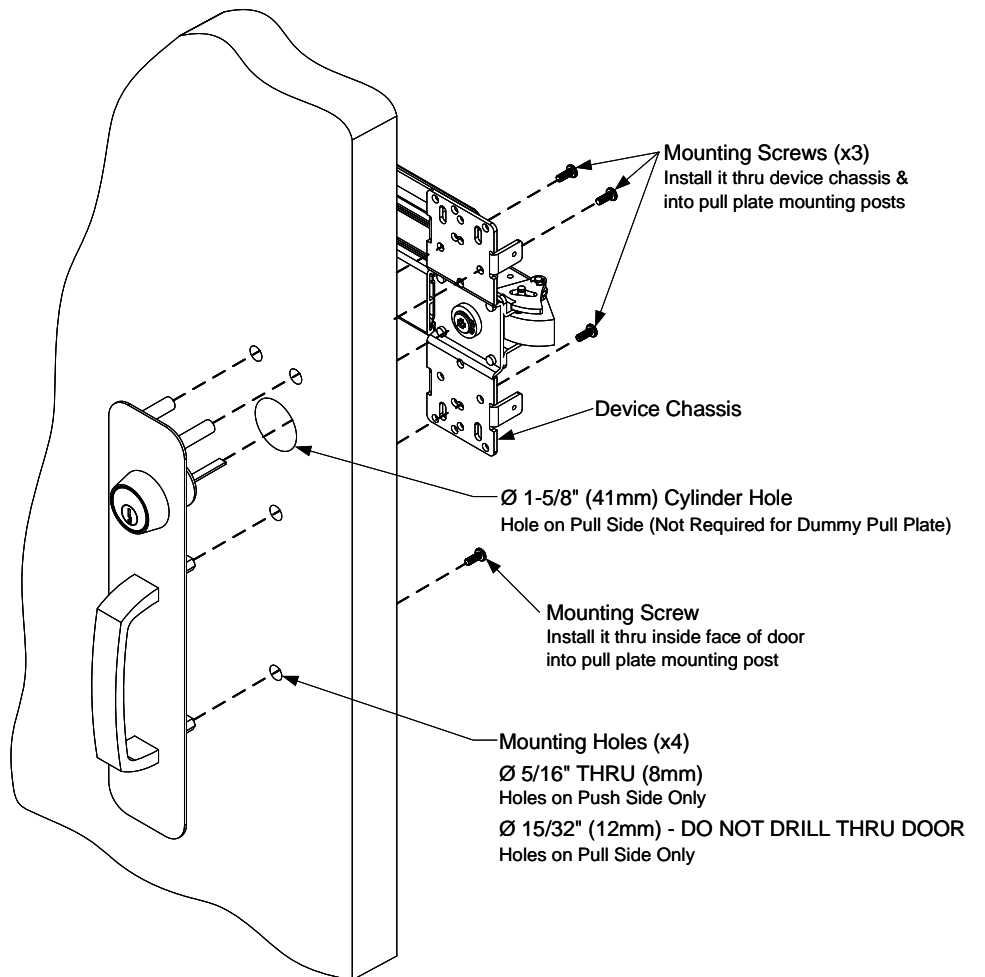
1. Install rim cylinder through the wave disc spring and then the tapered cylinder collar. (Do not use any other collar).
2. Insert the rim cylinder through hole in pull plate. Then on the back side of the pull plate, place the cylinder retaining cup over the rim cylinder with the tailpiece through the cylinder guide.
3. Use two (2) break-off screws and fasten the cylinder retaining cup to the rim cylinder assembly.



INSTALLING PULL PLATE

1. Use template to mark hole locations on door. Drill holes into door.
2. Insert the pull plate four (4) mounting posts and cylinder assembly through holes in door.
3. Rim cylinder tailpiece should insert into the exit device cam. If tailpiece is too long and protrudes from the door's interior surface, carefully measure and mark the tailpiece at the closest break-off line. Then use pliers, break tailpiece at marked break-off line to achieve the appropriate length.
4. Fasten the pull plate and the exit device using the four (4) supplied mounting screws.

NOTE: Standard 1-3/4" Door used to show Door Prep and Mounting.





TEMPLATE

TEMP-SP03
SATURN ESCUTCHEON 03 NIGHTLATCH PULL PLATE

Note;
This template is used for Rim Mount and Surface Mount Vertical Rod Devices. It is not available for Concealed Vertical Rod Exit Devices and Mortise exit devices.

CAUTION
DO NOT USE DOOR EDGE

Mounting Holes (4X)
DRILL Ø 5/16" THRU
HOLES ON PUSH SIDE ONLY
DRILL Ø 15/32" - DO NOT DRILL THRU DOOR
HOLES ON PULL SIDE ONLY

