



SECURITY DOOR CONTROLS ■ WWW.SDCSECURITY.COM
801 Avenida Acaso, Camarillo, CA 93012
[t] 800.413.8783 ■ 805.494.0622 ■ E-mail: service@sdsecurity.com

TEMPLATE-S6203-SP03

Devices covered by this template:

Panic / Fire SVR Exit Device with 03 Night-Latch Pull Plate

RHR PREP

(4x) DEVICE MOUNTING HOLES (4th hole shown on Trim Template)
TRIM: DRILL 5/16" CLEARANCE HOLES ON PUSH SIDE ONLY

(2x) END CAP BRACKET HOLES

METAL: DRILL / TAP FOR 1/4"-20 MACHINE SCREWS.

WOOD: PRE-DRILL 1/8" HOLES.

SEXBOLTS: DRILL 5/16" CLEARANCE HOLES ON PUSH SIDE, 3/8" ON PULL SIDE.

5/8" CLEARANCE HOLE FOR RIM CYLINDER.

FOLD HERE
CAUTION
DO NOT USE DOOR EDGE

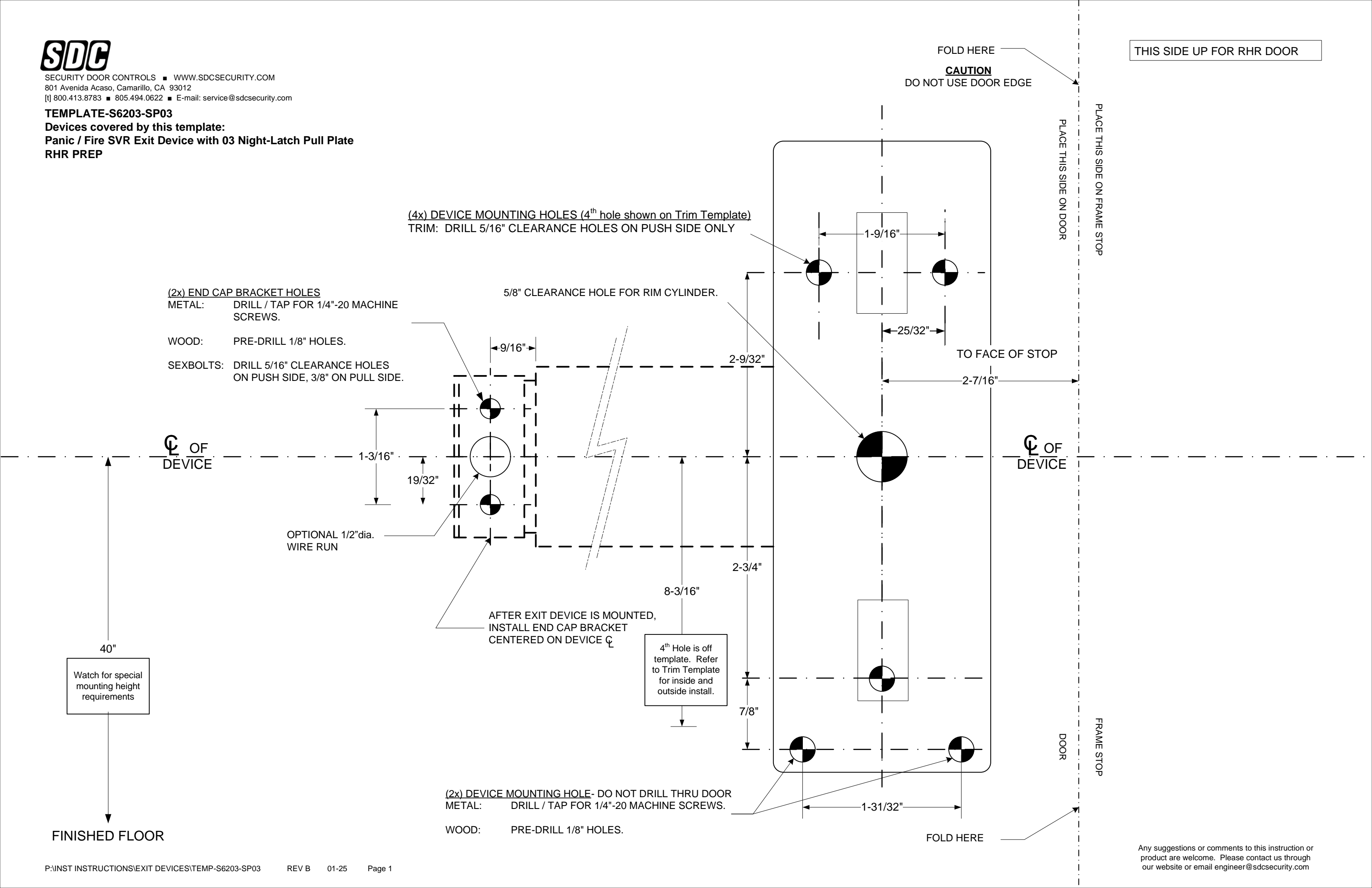
THIS SIDE UP FOR RHR DOOR

PLACE THIS SIDE ON FRAME STOP
DOOR

FRAME STOP

FOLD HERE

Any suggestions or comments to this instruction or product are welcome. Please contact us through our website or email engineer@sdsecurity.com



THIS SIDE UP FOR LHR DOOR

FOLD HERE
CAUTION
DO NOT USE DOOR EDGE

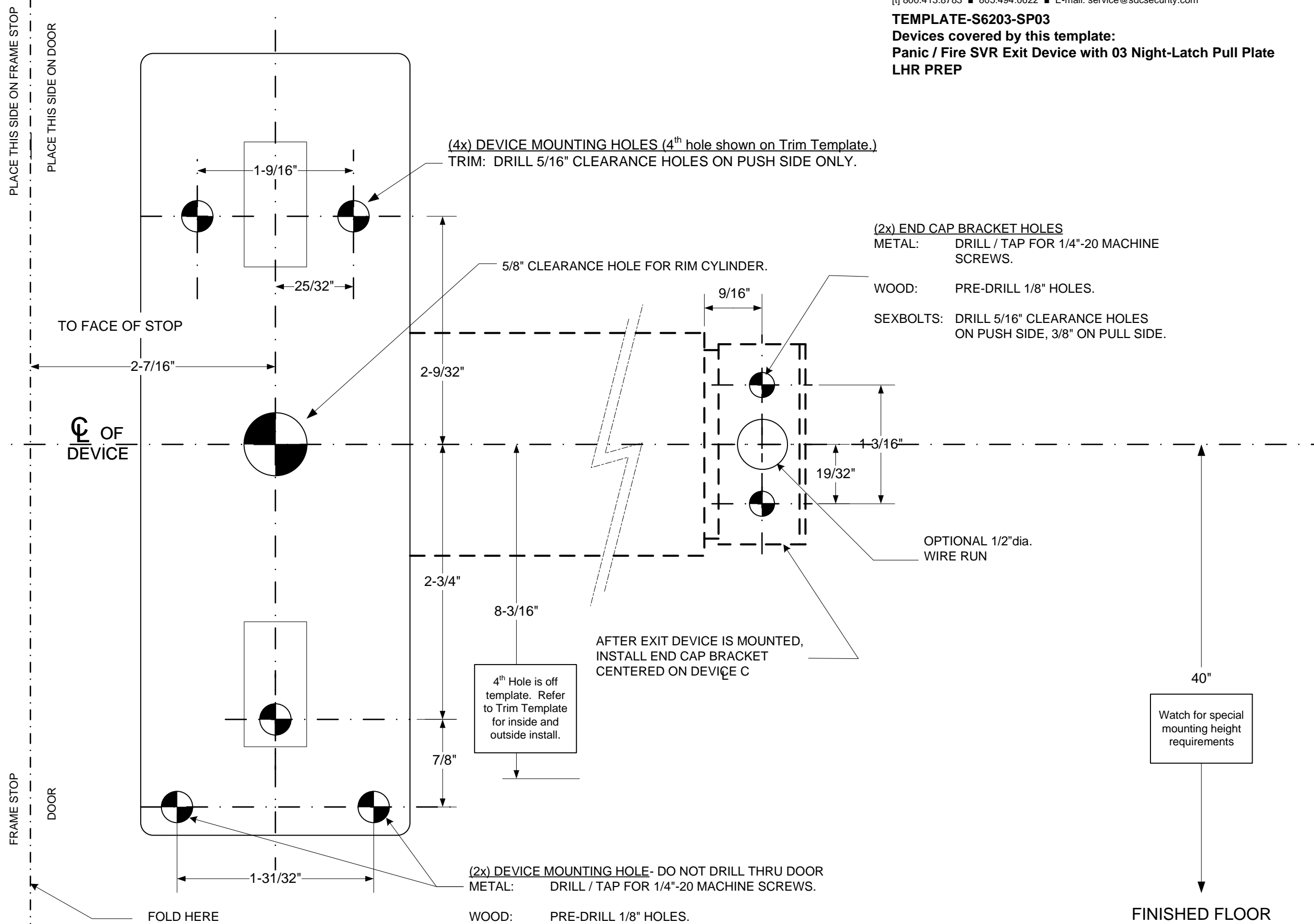


SECURITY DOOR CONTROLS ■ WWW.SDCSECURITY.COM
801 Avenida Acaso, Camarillo, CA 93012
[t] 800.413.8783 ■ 805.494.0622 ■ E-mail: service@sdsecurity.com

TEMPLATE-S6203-SP03

Devices covered by this template:

**Panic / Fire SVR Exit Device with 03 Night-Latch Pull Plate
LHR PREP**

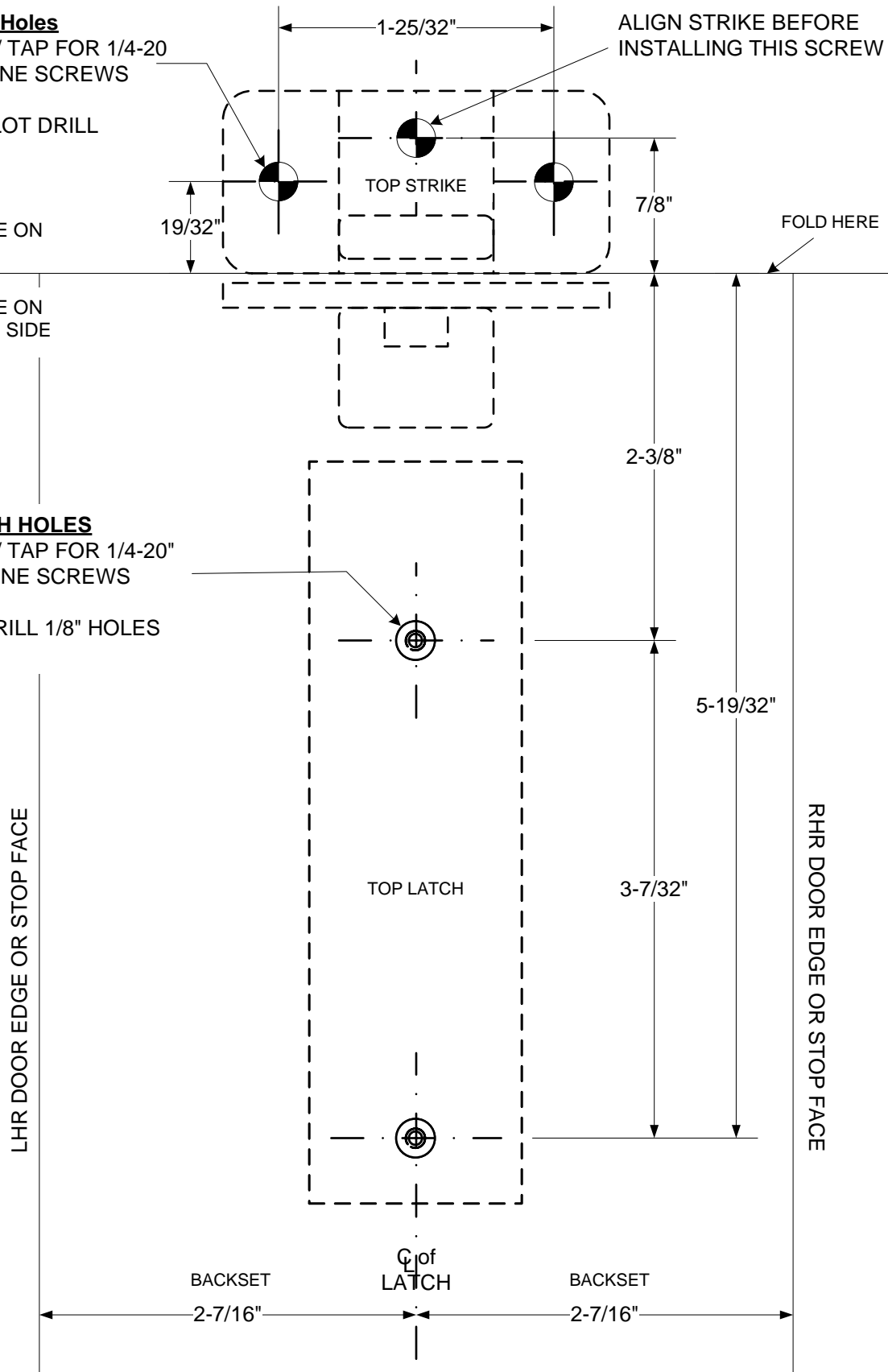


**TOP LATCH
TEMPLATE****(3x) Top Strike Holes**METAL: DRILL / TAP FOR 1/4-20
MACHINE SCREWS

WOOD: 1/8" PILOT DRILL

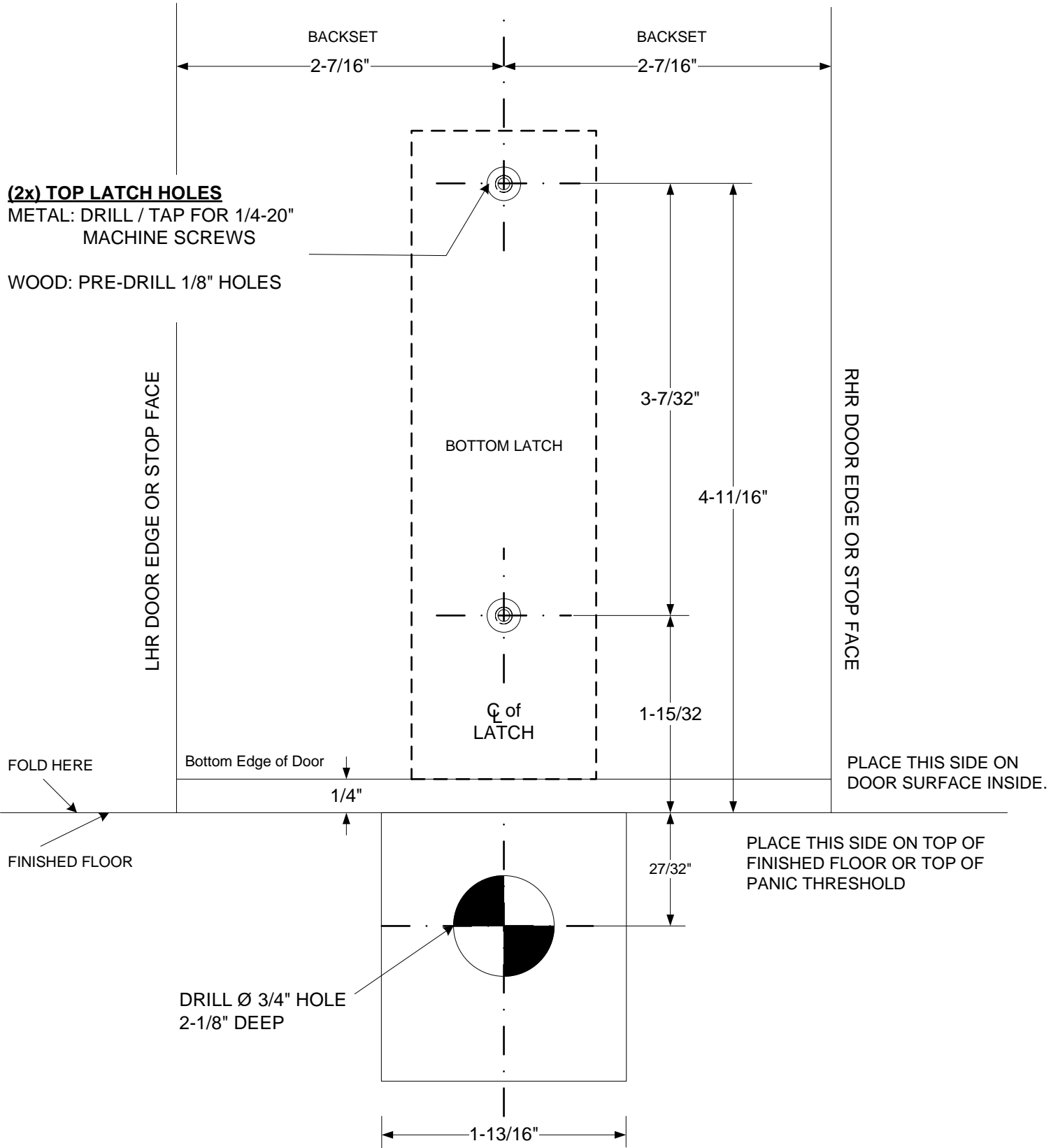
PLACE THIS SIDE ON
TOP FRAME.PLACE THIS SIDE ON
DOOR SURFACE SIDE**(2x) TOP LATCH HOLES**METAL: DRILL / TAP FOR 1/4-20"
MACHINE SCREWS

WOOD: PRE-DRILL 1/8" HOLES



**BOTTOM LATCH
TEMPLATE**

(NOT REQUIRED FOR LBR DEVICE)



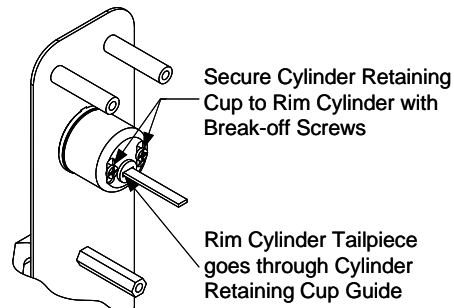
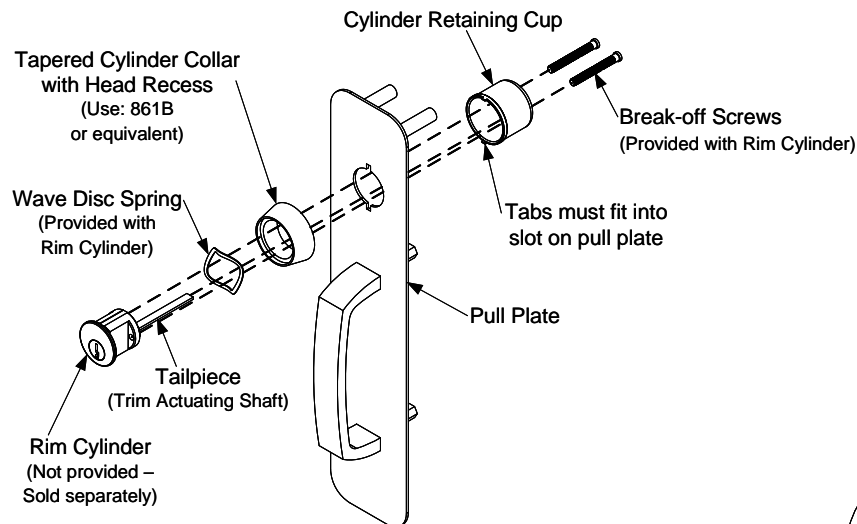
INSTALLATION INSTRUCTIONS

SP03U

S6200 SVR SATURN ESCUTCHEON 03 NIGHTLATCH PULL PLATE

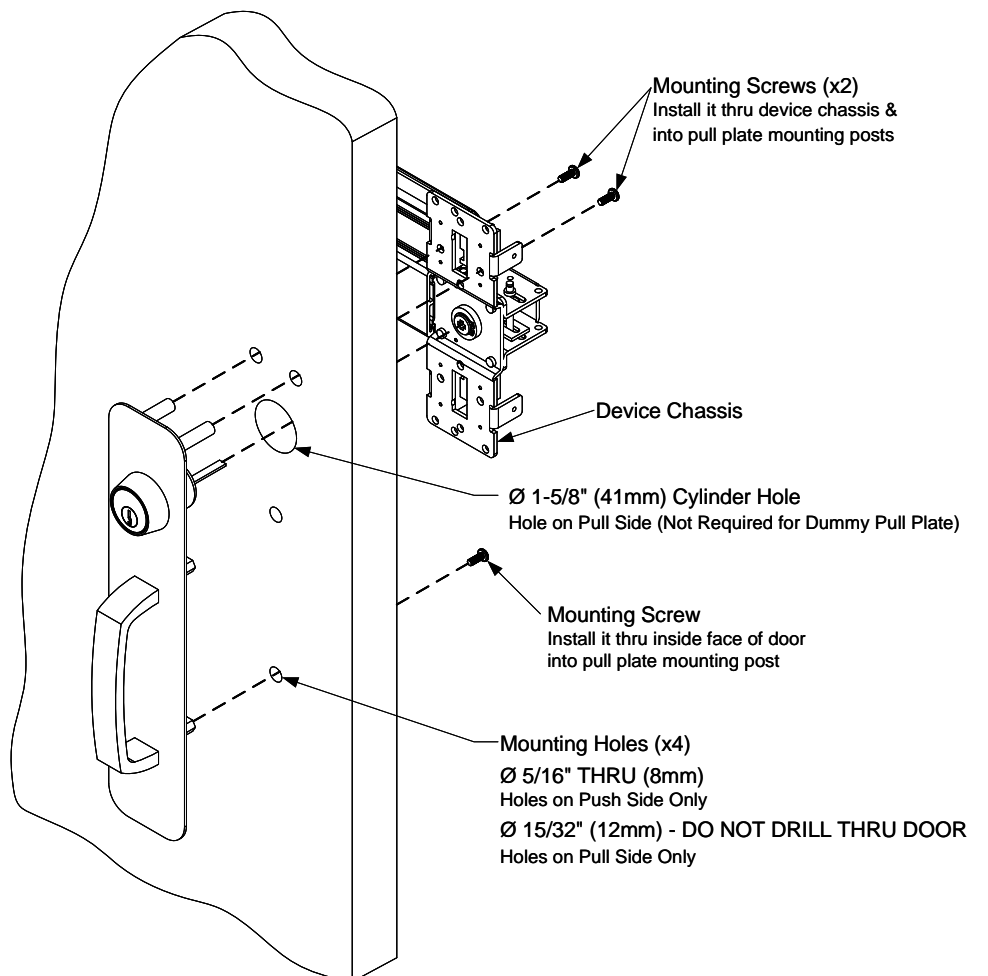
INSTALLING RIM CYLINDER TO PULL PLATE

1. Install rim cylinder through the wave disc spring and then the tapered cylinder collar. (Do not use any other collar).
2. Insert the rim cylinder through hole in pull plate. Then on the back side of the pull plate, place the cylinder retaining cup over the rim cylinder with the tailpiece through the cylinder guide.
3. Use two (2) break-off screws and fasten the cylinder retaining cup to the rim cylinder assembly.

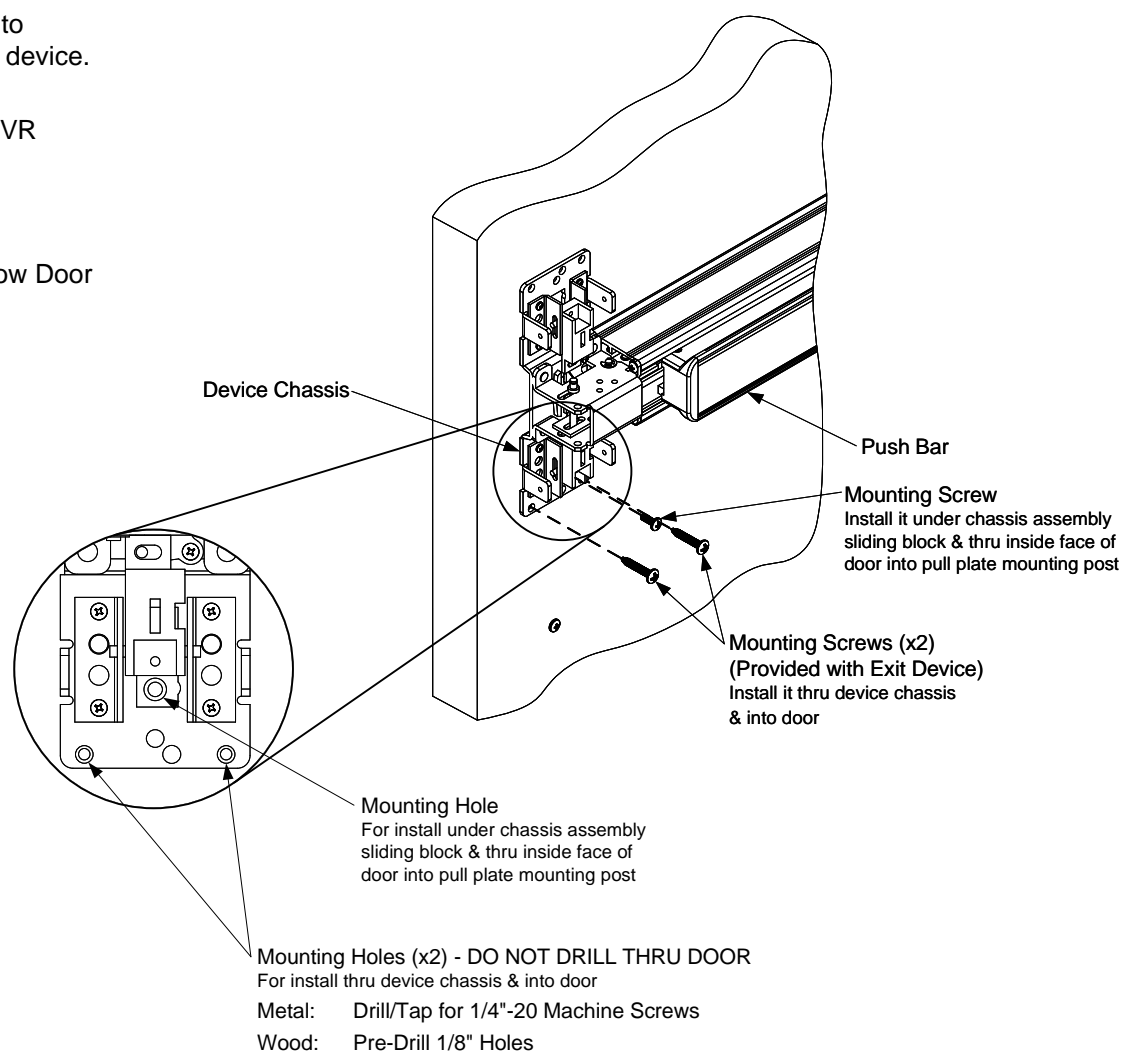


INSTALLING PULL PLATE

1. Use template to mark hole locations on door. Drill holes into door.
2. Insert the pull plate four (4) mounting posts and cylinder assembly through holes in door.
3. Rim cylinder tailpiece should insert into the exit device cam. If tailpiece is too long and protrudes from the door's interior surface, carefully measure and mark the tailpiece at the closest break-off line. Then use pliers, break tailpiece at marked break-off line to achieve the appropriate length.
4. Fasten the pull plate and the exit device using three (3) of the supplied mounting screws.
5. With surface vertical rods not installed, depress and hold the push bar to retract the sliding blocks from the chassis assembly, exposing the mounting hole into pull plate mounting post.
6. Install the last three (3) mounting screws to complete fastening the pull plate and exit device.
7. Proceed with completing the remaining SVR device installation steps.



NOTE: Standard 1-3/4" Door used to show Door Prep and Mounting.



Metal: Drill/Tap for 1/4"-20 Machine Screws
Wood: Pre-Drill 1/8" Holes



TEMPLATE

TEMP-SP03
SATURN ESCUTCHEON 03 NIGHTLATCH PULL PLATE

Note;
This template is used for Rim Mount and Surface Mount Vertical Rod Devices. It is not available for Concealed Vertical Rod Exit Devices and Mortise exit devices.

CAUTION
DO NOT USE DOOR EDGE

Mounting Holes (4X)

DRILL Ø 5/16" THRU
HOLES ON PUSH SIDE ONLY
DRILL Ø 15/32" - DO NOT DRILL THRU DOOR
HOLES ON PULL SIDE ONLY

