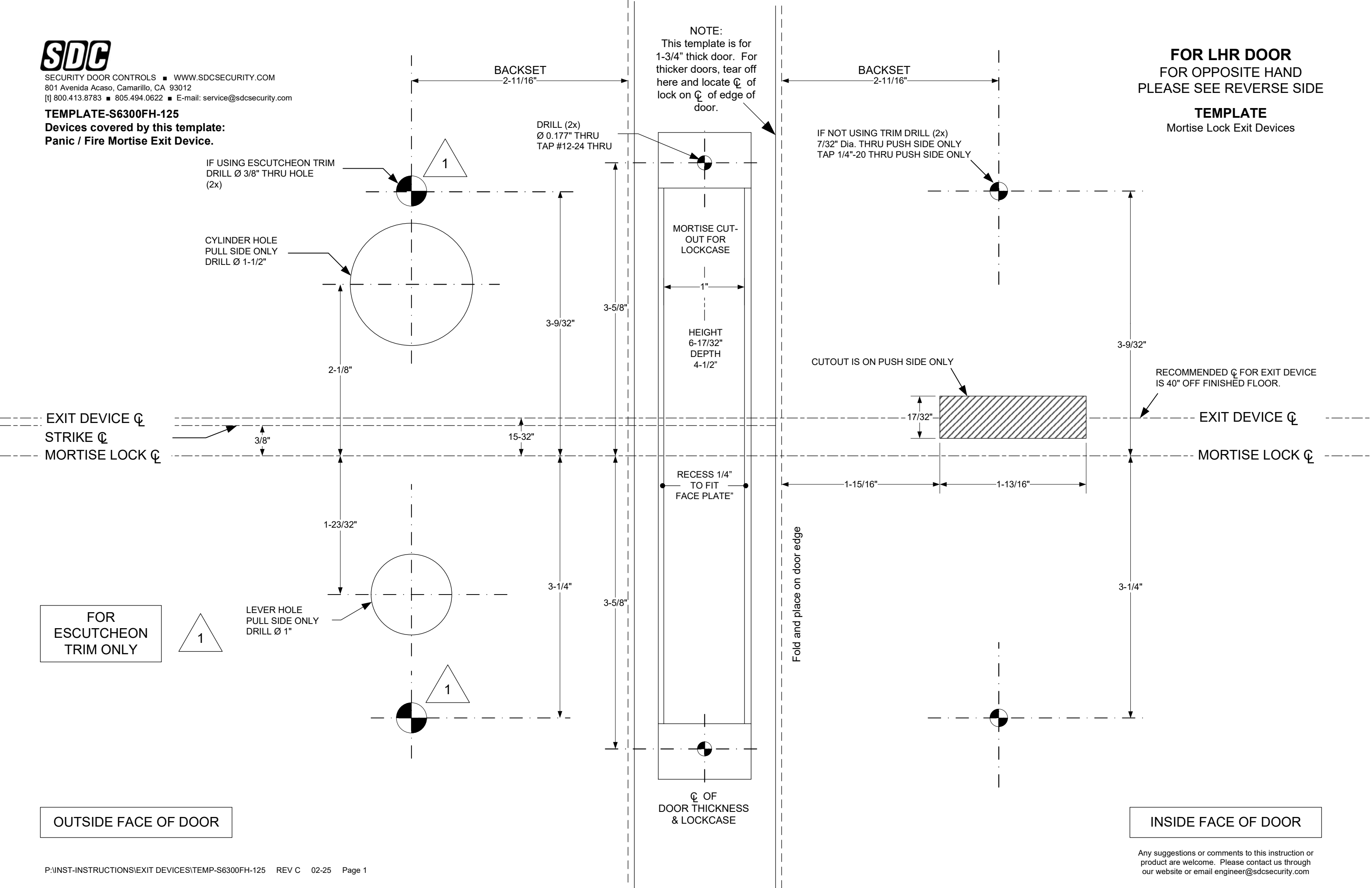




SECURITY DOOR CONTROLS ■ WWW.SDCSECURITY.COM  
801 Avenida Acaso, Camarillo, CA 93012  
[t] 800.413.8783 ■ 805.494.0622 ■ E-mail: service@sdsecurity.com

TEMPLATE-S6300FH-125

Devices covered by this template:  
Panic / Fire Mortise Exit Device.



FOR LHR DOOR  
FOR OPPOSITE HAND  
PLEASE SEE REVERSE SIDE

TEMPLATE  
Mortise Lock Exit Devices

FOR  
ESCUTCHEON  
TRIM ONLY

OUTSIDE FACE OF DOOR

INSIDE FACE OF DOOR

FOR RHR DOOR  
FOR OPPOSITE HAND  
PLEASE SEE REVERSE SIDE

**TEMPLATE**  
Mortise Lock Exit Devices

IF NOT USING TRIM DRILL (2x)  
7/32" Dia. THRU PUSH SIDE ONLY  
TAP 1/4"-20 THRU PUSH SIDE ONLY

BACKSET

2-11/16"

NOTE:  
This template is for  
1-3/4" thick door. For  
thicker doors, tear off  
here and locate  $\varnothing$  of  
lock on  $\varnothing$  of edge of  
door.

DRILL (2x)  
 $\varnothing$  0.177" THRU  
TAP #12-24 THRU

IF USING ESCUTCHEON TRIM  
DRILL  $\varnothing$  3/8" THRU HOLE  
(2x)

CYLINDER HOLE  
PULL SIDE ONLY  
DRILL  $\varnothing$  1-1/2"

MORTISE  
CUT-OUT FOR  
LOCKCASE

1"

HEIGHT  
6-17/32"  
DEPTH  
4-1/2"

CUTOUT IS ON PUSH SIDE ONLY

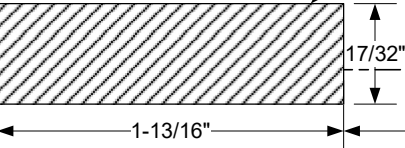
RECOMMENDED  $\varnothing$  FOR EXIT DEVICE  
IS 40" OFF FINISHED FLOOR.

EXIT DEVICE  $\varnothing$

MORTISE LOCK  $\varnothing$

3-9/32

3-1/4"



RECESS 1/4"  
TO FIT  
FACE PLATE"

$\varnothing$  OF  
DOOR THICKNESS  
& LOCKCASE

Fold and place on door edge

2-11/16"

3-5/8"

2-1/8"

15/32"

1-23/32"

LEVER HOLE  
PULL SIDE ONLY  
DRILL  $\varnothing$  1"

3-5/8"

3-9/32"

3-1/4"

EXIT DEVICE  $\varnothing$

STRIKE  $\varnothing$

MORTISE LOCK  $\varnothing$

FOR  
ESCUTCHEON  
TRIM ONLY

1

INSIDE FACE OF DOOR

OUTSIDE FACE OF DOOR

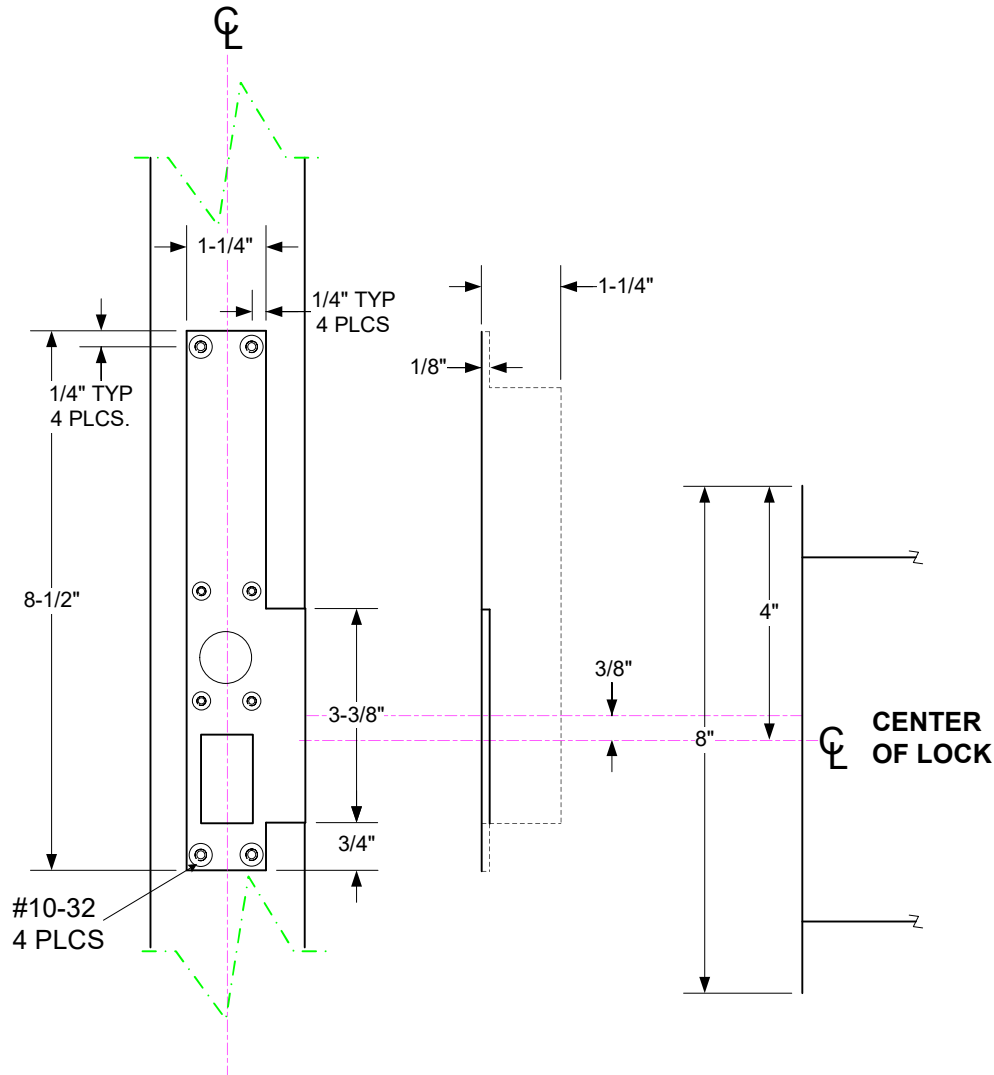


SECURITY DOOR CONTROLS ■ WWW.SDCSECURITY.COM  
801 Avenida Acaso, Camarillo, CA 93012  
[t] 800.413.8783 ■ 805.494.0622 ■ E-mail: service@sdsecurity.com

**TEMPLATE-S6300FH-125**  
**Devices covered by this template:**  
**Panic Mortise Device and Fire Mortise Device.**

**TEMP-S6303FH-125**  
**STRIKE TEMPLATE 1-1/4" ~ 1-3/4" FRAMES**

**NOT TO SCALE**

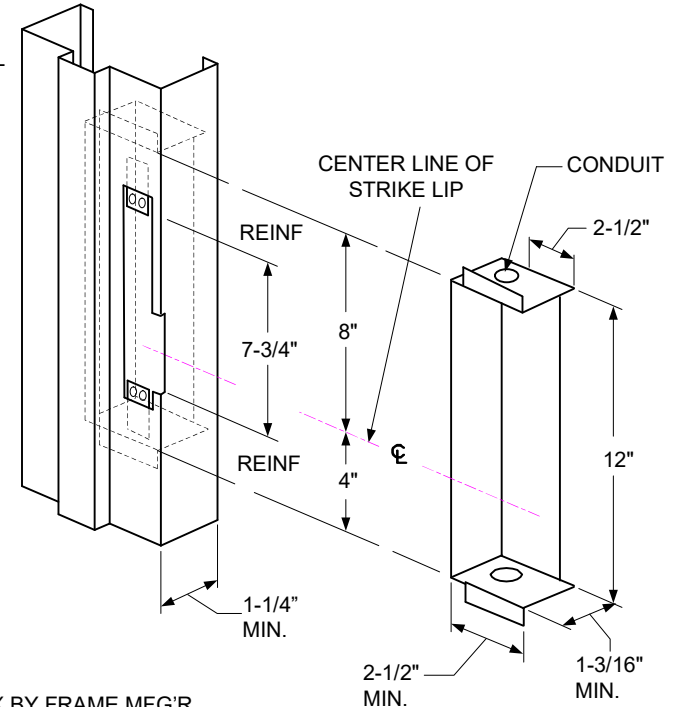


NOTE:  
CONCRETE/  
MASONRY DETAIL  
SHOWN

FOR STRIKE  
RELATION TO  
LOCK SEE LEFT  
SIDE OF  
TEMPLATE

NOTE:  
MINIMUM FRAME  
FACE 1-1/4"

RIGHT HAND  
SHOWN, LEFT  
HAND OPPOSITE



ELECTRICAL BOX BY FRAME MFG'R

IMPORTANT

Details show space requirements for electric controller box. Allowances for different wall construction materials must be taken into consideration. Install conduit connectors in top of box before welding to frame.

NOTE:

THE 7-3/4" CLEARANCE BETWEEN THE STRIKE REINFORCEMENT TABS IS CRITICAL.  
\*MAXIMUM THICKNESS OF TABS .125

UL LISTED BOX AS SHOWN AVAILABLE  
FROM SECURITY DOOR CONTROLS  
PART #7500EB-N