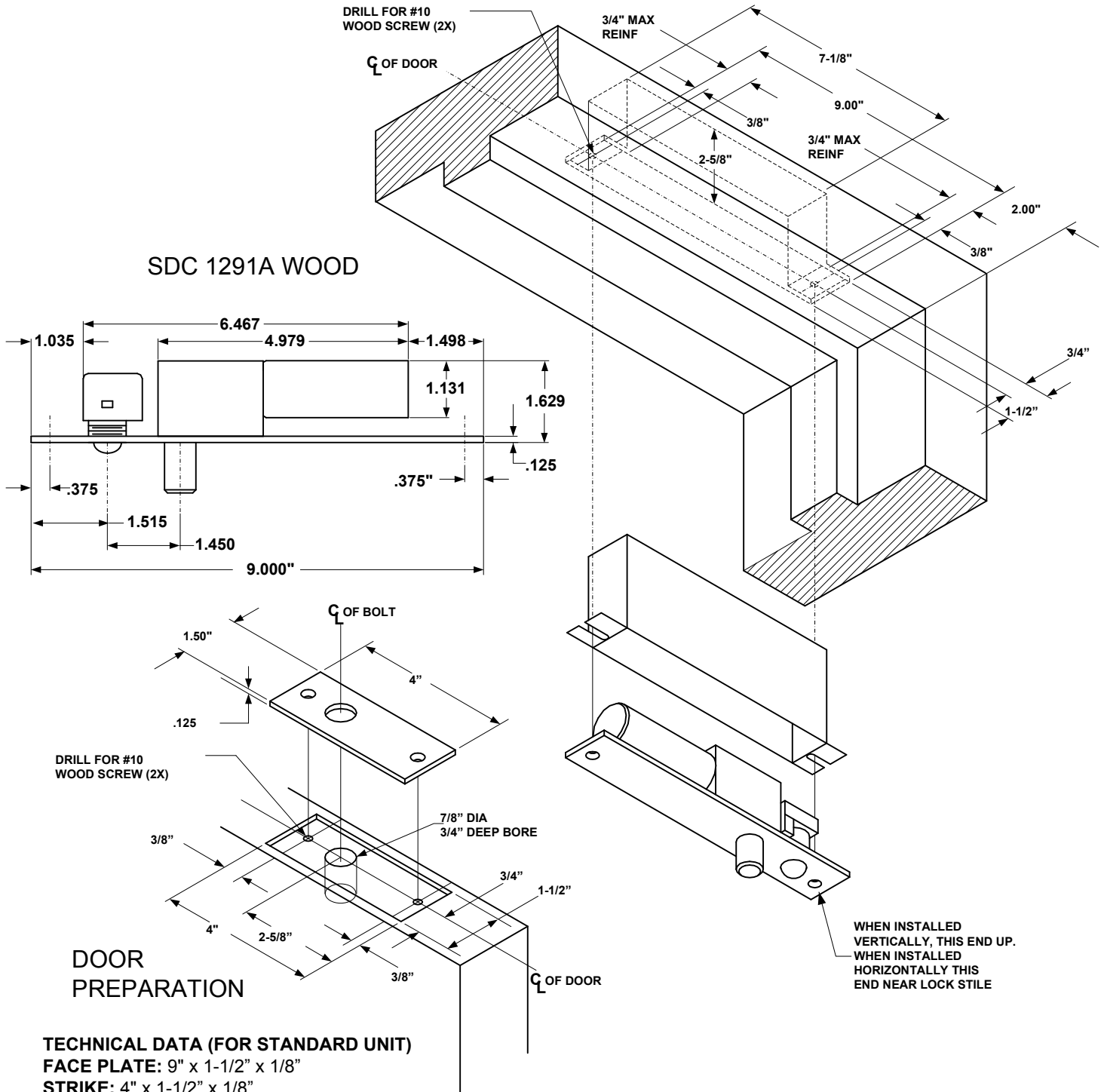


**NOTE: ELECTRICAL BOX #1000EB REQUIRED FOR WOOD APPLICATION.**  
**NOTE: TEMPLATE DIMENSIONS ARE SUBJECT TO CHANGE WITHOUT NOTICE.**



**TECHNICAL DATA (FOR STANDARD UNIT)**  
**FACE PLATE:** 9" x 1-1/2" x 1/8"  
**STRIKE:** 4" x 1-1/2" x 1/8"  
**ID REQUIREMENTS:** 7-1/8" x 1-1/2" x 2-5/8"  
**BOLT:** 5/8" DIA. SOLID STAINLESS STEEL  
**BOLT THROW:** 3/4"

	Security Door Controls
	801 Avenida Acaso,
	Camarillo, CA 93012
	(805) 494-0622
	Fax: (805) 494-8861
www.sdcsecurity.com	
E-mail: service@sdcsecurity.com	

**TEMPLATE**  
**1291A WOOD**

ORIG. DATE  
 12/20/00

DRAWING  
 3213