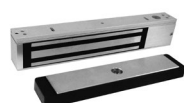


Value & Specialty Electromagnetic Locks

**E1200****E6200****350****1591****1575****E300**

MODEL		LIST \$
E1200	Value Single Magnetic Lock, 1200lbs, 628, DPS, BAS, LED	298.00
E600	Value Single Magnetic Lock, 600lbs, 628, DPS, BAS, LED	247.00
E6200	Industrial Single Magnetic Lock, 1200lbs, Weatherized, 630, DPS, BAS	487.00
350V	Narrow Single Magnetic Lock, 1200lbs, 628, DPS, BAS, LED	430.00
352V	Narrow Double Magnetic Lock, 1200lbs, 628, DPS, BAS, LED	858.00
1591U	Sliding Door Single Magnetic Lock, 850lbs, 630	408.00
1591UDPS	Sliding Door Single Magnetic Lock, 850lbs, 630, DPS	473.00
1575U	Gate Single Magnetic Lock, 1200lbs, Weatherized, 630, DPS, BAS	498.00
1576U	Gate Single Magnetic Lock, Face-Drilled, 1200lbs, Weatherized, 630, DPS, BAS	498.00
E300	Cabinet Single Magnetic Lock, 300lbs, 628, BAS	195.00

RELATED PRODUCTS

When you order any SDC products in this section, there are a number of related or complementary products that have proven to work well with your selection.

E12F01*	E1200 Filler Plate, 5/8" x 3/4" x 10 1/2"	25.00
E12F02*	E1200 Filler Plate, 3/4" x 3/4" x 10 1/2"	25.00
E12L*	E1200 Angle Bracket, 1 1/2" x 3/4" x 10 1/2"	30.00
E12Z	E1200 Top Jamb Mounting Kit	99.00
E12U	E1200 Glass Door Mounting Kit, 2 1/2" x 1 1/2" x 8 1/2"	141.00
E1200-DF	E1200 Heavy Duty Drill Fixture	176.00
E6Z	E600 Top Jamb Mounting Kit	99.00
E6U	E600 Glass Door Mounting Kit, 2 1/2" x 1 1/4" x 7 1/4"	141.00
TJ62	E6200 Top Jamb Mounting Kit	141.00
TJ350	350V Top Jamb Mounting Kit	153.00
TJ352	352V Top Jamb Mounting Kit	269.00
HDB350V	350V Glass Door Mounting Kit, 2 1/2" x 1 1/2" x 9 7/8"	200.00
HDB352V	352V Glass Door Mounting Kit, 2 1/2" x 1 1/2" x 9 7/8", Qty 2	420.00
LAB	1591U Sliding Door Angle Bracket, 2" x 2" x 8"	65.00
AMP	1591U Sliding Door Armature Mounting Plate, 1 1/2" x 5/16" x 6 5/16"	53.00
1575-BK	1575 Angle Bracket, 2" x 2 3/8" x 8 1 1/16"	118.00
1576-AB	1576 Armature Mounting Bracket, 2 3/4" x 3 1/4" x 10 7/8"	94.00
1576-BK	1576 Angle Bracket, 1 3/16" x 2 3/4" x 8 1 1/16"	94.00
1576-MP	1576 Lock Body Mounting Plate, 1/4" x 2 1/2" x 8 1 1/16"	65.00
1576-ZBV**	1576 Z Bracket, 5 1/16" x 3 3/8" x 10 7/8"	186.00

* May be field cut for use with E600.

** Includes 1576-MP mounting plate.