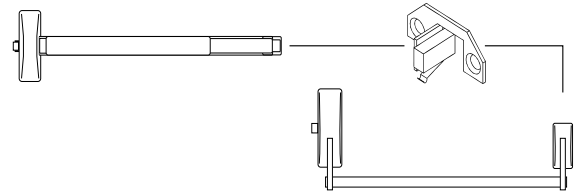


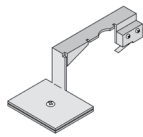
00500 Series

Retrofit Switch Kits



SDC's 00500 series retrofit switch kits provide electromagnetic lock release, delayed egress activation, request-to-exit (REX), alarm shunt or alarm activation.

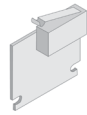
Switch kits are field installed in the inactive hinge pad of rim mount exit devices, mortise exit devices, concealed vertical rod exit devices and surface vertical rod exit devices.



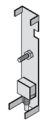
00510



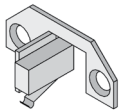
00511



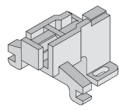
00512



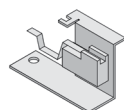
00514



00516



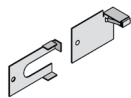
00517



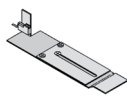
00518



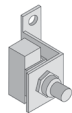
00519



00525



00527



00528

MODELS

- 00510** Von Duprin 33, 35, 98, 99
- 00510-2** Von Duprin 33, 35, 98, 99 (DPDT)
- 00510-F** Von Duprin 33, 35, 98, 99 (Fire-Rated)
- 00511** Von Duprin 55
- 00512** Von Duprin 88
- 00514** Dor-O-Matic 990, 1090, 1990, 2090
- 00515** Sargent 9300, 9400, 9500
- 00516** Sargent 9600, 9700, 9800, 9900
- 00517** Adams Rite 8300, 8400, 8700, 8800
- 00518** Precision Series 1100
- 00518A** Precision Apex 2100 - 2800
- 00519** Jackson 1095
- 00519-2** Jackson 1095 (DPDT)
- 00520** Corbin 3000
- 00521** Corbin 7000
- 00525** Monarch 18, 19
- 00525-2** Monarch 18, 19 (DPDT)
- 00526** Corbin ED8200
- 00527** Sargent 80 & Arrow S3800, S120
- 00527-2** Sargent 80 & Arrow S3800, S120 (DPDT)
- 00528** Sargent 20, 60 & Yale 2100
- 00531** Yale 7000 & Corbin 4000, 5000
- 00535** Kawneer Panel Line Dor-O-Matic 1390
- 00536** Jackson 1295
- 00539** Cal Royal 9800
- 00540** Arrow 3000, 4000
- 00542** Hager 4700
- 00590** Dor-O-Matic 1690



SPECIFICATIONS

00500

Contact SPDT
5 Amp @ 30 VDC Resistive

HOW TO ORDER

FOLLOW STEPS FOR ORDERING

 Designates optional step

1| SPECIFY MODEL*

- | | |
|---|--|
| 00510 Von Duprin 33, 35, 98, 99 | 00521 Corbin 7000 |
| 00510-2 Von Duprin 33, 35, 98, 99 (DPDT) | 00525 Monarch 18, 19 |
| 00510-F Von Duprin 33, 35, 98, 99 (Fire-Rated) | 00525-2 Monarch 18, 19 (DPDT) |
| 00511 Von Duprin 55 | 00526 Corbin ED8200 |
| 00512 Von Duprin 88 | 00527 Sargent 80 & Arrow S3800, S120 |
| 00514 Dor-O-Matic 990, 1090, 1990, 2090 | 00527-2 Sargent 80 & Arrow S3800, S120 (DPDT) |
| 00515 Sargent 9300, 9400, 9500 | 00528 Sargent 20, 60 & Yale 2100 |
| 00516 Sargent 9600, 9700, 9800, 9900 | 00531 Yale 7000 & Corbin 4000, 5000 |
| 00517 Adams Rite 8300, 8400, 8700, 8800 | 00535 Kawneer Panel Line Dor-O-Matic 1390 |
| 00518 Precision Series 1100 | 00536 Jackson 1295 |
| 00518A Precision Apex 2100 - 2800 | 00539 Cal Royal 9800 |
| 00519 Jackson 1095 | 00540 Arrow 3000, 4000 |
| 00519-2 Jackson 1095 (DPDT) | 00542 Hager 4700 |
| 00520 Corbin 3000 | 00590 Dor-O-Matic 1690 |

* Consult factory for exit device switch kits not shown. Modification of any kind to a UL Listed device may void UL Listing.

STEP NUMBER: 1

ORDERING EXAMPLE: **00510**